



**SRS**  
ROLLER SHUTTERS

ALUMINIUM ROLLER SHUTTERS  
FOR SPECIAL VEHICLES





**SRS**  
ROLLER SHUTTERS

## INTRODUCTION

The main target of company SRS is to offer competence and reliability to the customers in the production of aluminium roller shutters for special vehicles.

SRS has more than 30 years experience in producing roller shutters and is specialized in the aluminium profile manufacturing, extrusion and assembling.

Furthermore the Company has a wide sales net with many contact points all over Europe and assists the customer through all stages: offer, order, delivery and after sales service.

The SRS products are manufactured in Italy and are therefore a synonym of reliability, functionality, technology and appealing design for the world wide market of special vehicles.



## ROLLER SHUTTERS

The SRS roller shutters are made in extruded aluminium profiles that are assembled in order to assure the maximum sealing against bad weather, easy mounting and noiseless functioning. The roller shutters can be mounted on many different types of commercial, industrial and special vehicles, replacing the cumbersome and troublesome leaf-doors. The profiles are of high quality, made in special shapes, are satin-finished silver anodized or RAL 7035 powder painted and can be 30mm, 35mm or 38mm high.

On request the profiles can be painted in more than 150 RAL colours.

The closing is automatic and is available with or without key. It is made of metallic and plastic mechanisms in order to assure an excellent and long lasting reliability.

The winding rolls are available in Ø 45 or 60mm, in order to give a solution to room problems and are realized using steel springs, which grant the maximum toughness.

The lateral guides, made in aluminium and in special shapes, and the lateral sealing gaskets make the roller shutter slide perfectly. Thanks to the upper, lower and internal sealing gaskets the metallic parts can't come in contact with each other. The roller shutters can be made in different dimensions, complying with the maximum recommended heights.

## HIGHLIGHTS

- Reliability and resistance against external events
- Perfect sliding
- Balanced movements
- Easy mounting and use
- Easy to handle
- Space-saving
- Safety for the operator
- Customer-made solutions
- Different closing groups with different handles
- Winding rolls with two different diameters (depending on the shutters dimensions) for maximum toughness, reliability and space-saving
- Easy mounting on the vehicle body
- Centering of the lateral guide profiles on demand
- Different lateral guide profiles available for better fitting in different chassis
- Powder coated painting for the best external appearance
- Different available accessories:
  - Electromagnetic switches 12V 2c and 24V 2c
  - Magnet with plate
  - Door opening with standard, neon or led lights
  - Remote controls and electric shutters 12V, 24V or 220V
- Personalized customer's LOGO
- Quick delivery terms
- Spare parts always available
- Experience and assistance to the customer





**SRS**  
ROLLER SHUTTERS

## FROM OFFER TO DELIVERY

### KNOW HOW

The company uses the last and state of the art solutions for the manufacturing, including the extrusion of the profiles, the moulding of the details, the packing and the delivery.

### QUALITY

All the production phases are monitored by qualified personnel that constantly check the manufacturing and characteristics of the final products.

### CUSTOMERS RELATIONSHIP

Our staff is always at the customer disposal, for requests, technical advices and help, in order to find always new and better solutions for the mounting, by taking advantage of the customers' suggestions and help.

### PERSONALIZATION

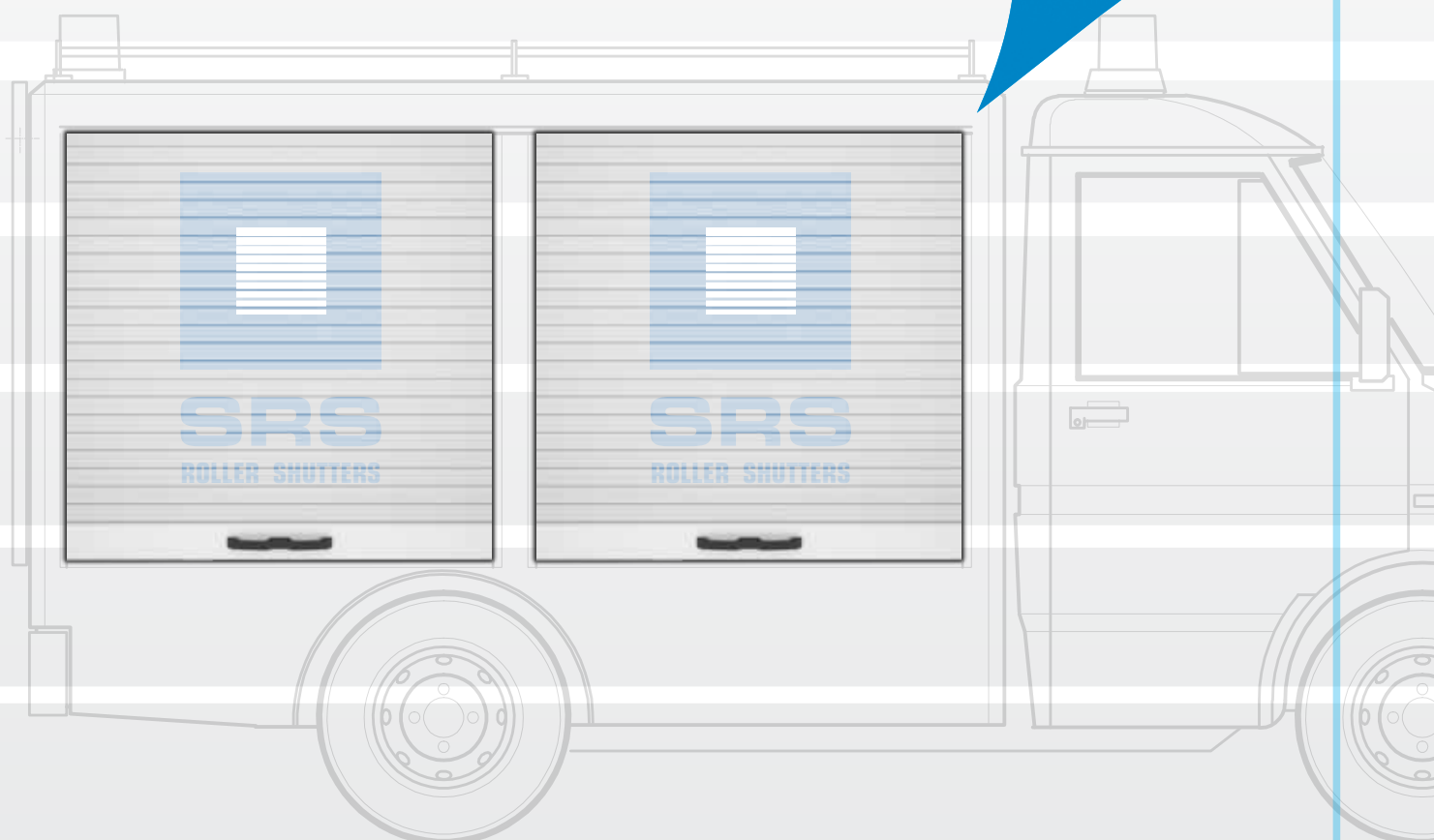
On demand the roller shutters can be personalized with the customer's LOGO or with the name of the company.



### AVAILABILITY AND QUICK DELIVERY TERMS

SRS offers to the customer availability and quickness in offer, order and delivery. All the spare parts are available.





# SRS ECO

The aluminium roller shutter mod. ECO is assembled with profiles H30 or H38, is realized in the required heights in extruded shapes and special characteristics. The shutter can be used for little and medium compartments, in substitution to the troublesome leaf-doors. Usually the roller shutters are delivered silver anodized or RAL 7035 painted, or on demand painted in different RAL colours.

## USEFUL AREA

Max. recommended area 1 m<sup>2</sup>

The sliding system of these shutters permits to make good use of the available space inside the vehicle. When open the shutter will lay flat horizontally under the roof and the eventual surplus length will lay vertically in the rear part.

This sliding system is recommended for areas of max. 1m2. It is a cheap and easy mounting solution, which anyway maintains the reliability and design standards of all SRS shutters.

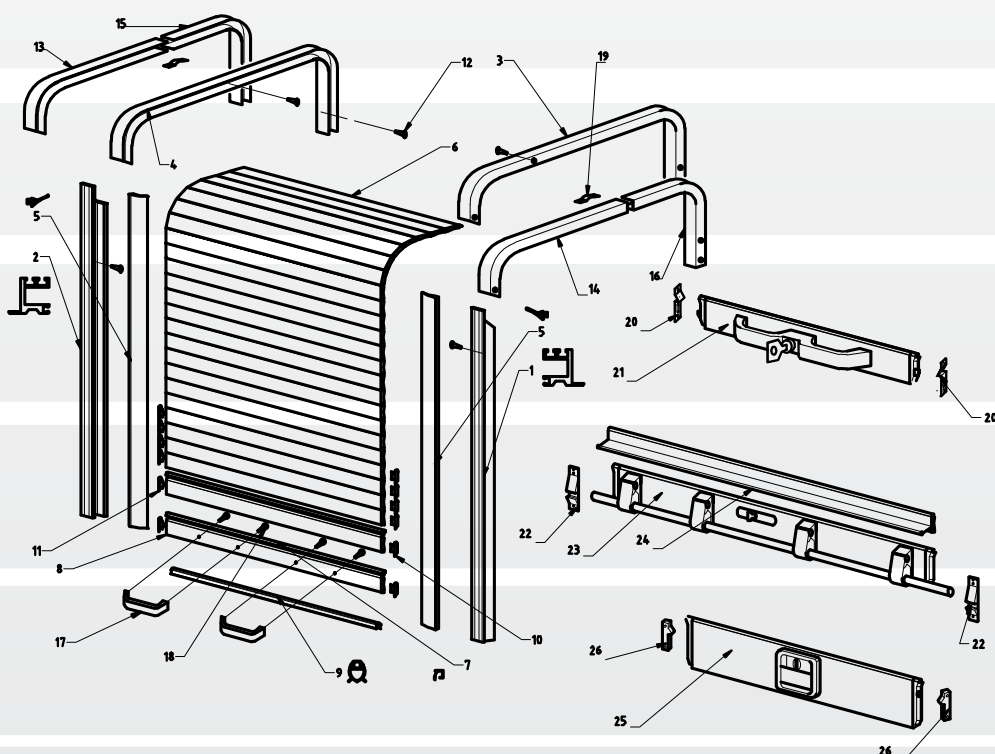
**The roller shutter will be delivered divided into parts, which can be easily assembled:**

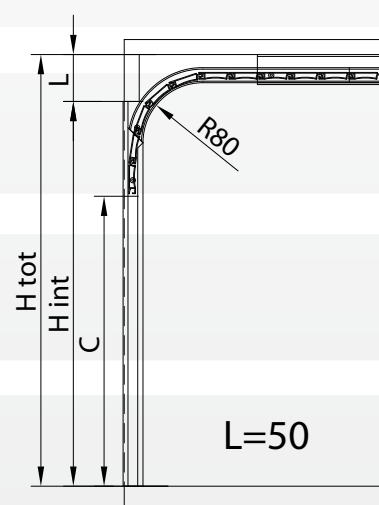
- 1 pre-assembled shutter complete with closing end with or without key
- 1 pair of vertical guides
- 2 pairs of curves (entire or separate)
- 2 eventual sliding extensions, to be put between the curves, when the curves are separate
- 1 box with accessories

**+ required optionals**

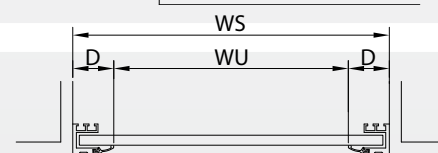
## EXPLODED VIEW

Pos.	Description	Code
1	right guide	70143.01
2	left guide	70143.02
3	right upper guide	70143.03
4	left upper guide	70143.04
5	side rubber profile	7026
6	shutter profile	7024
7	middle profile	7023
8	lower shutter profile	70143.08
9	lower rubber profile	7007
10	right sliding block	7010
11	left sliding block	7025
12	profiles fixing screws	70143.11
13	front left upper internal profile	70143.14
14	front right upper internal profile	70143.15
15	back left upper internal profile	70143.16
16	back right upper internal profile	70143.17
17	handles	70143.12
18	handle fixing screws	70143.13
19	stop spring	70143.18
20	locking	7006
21	locking block with key	7101
21	locking block without key	7102
22	locking	70180.00
23	barlock with key	70169.00
24	grip profile	7101
25	locking block with key	7006
26	locking	

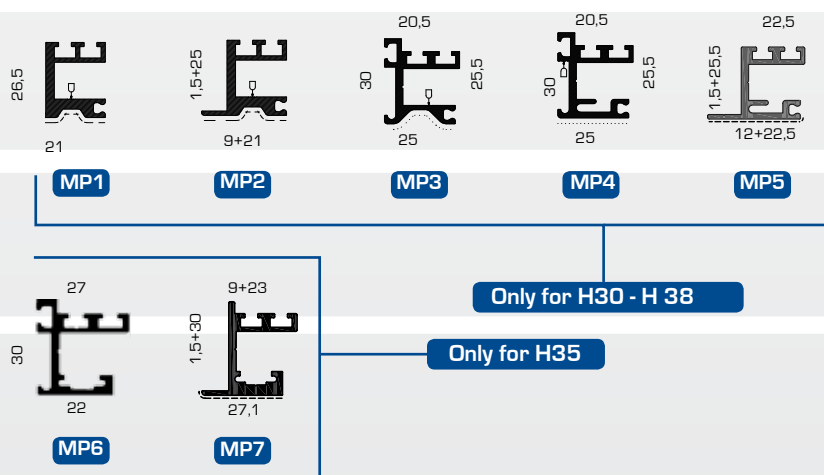




L=50



## AVAILABLE MOUNTING PROFILES



MEASUREMENTS	
H tot	Total height
H int	Internal height
L	Sliding room
C	Light height
WU	Light width
WS	Total width
D	Guide and gasket edge

# SRS ECO SIMPLY

The aluminium roller shutter mod. ECO SIMPLY is assembled with profiles H30 or H38, is realized in the required heights in extruded shapes and special characteristics. The shutter can be used for little and medium compartments, in substitution to the troublesome leaf-doors. Usually the roller shutters are delivered silver anodized or RAL 7035 painted, or on demand painted in different RAL colours.

## USEFUL AREA

Max. recommended area 1 m<sup>2</sup>

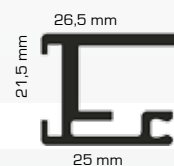
The sliding system of these shutters permits to make good use of the available space inside the vehicle. When open the shutter will lay flat horizontally under the roof and the eventual surplus length will lay vertically in the rear part.

This sliding system is recommended for areas of max. 1m2. It is a cheap and easy mounting solution, which anyway maintains the reliability and design standards of all SRS shutters.

**The roller shutter will be delivered divided into parts, which can be easily assembled:**

- 1 pre-assembled shutter complete with closing end with or without key
- 1 pair of vertical guides
- 2 pairs of plastic curves (entire or separate)
- 2 eventual sliding extensions, to be put between the curves, when the curves are separate
- 1 box with accessories

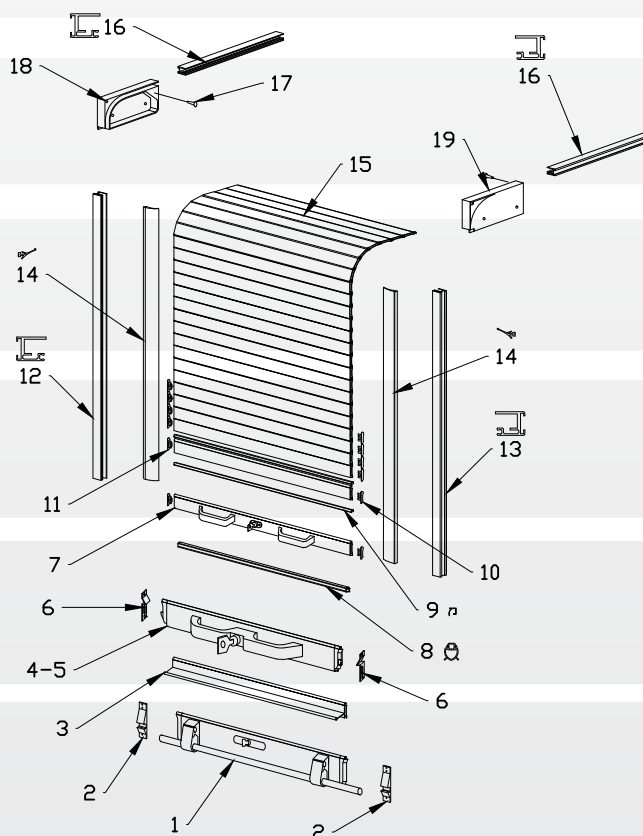
+ required optionals



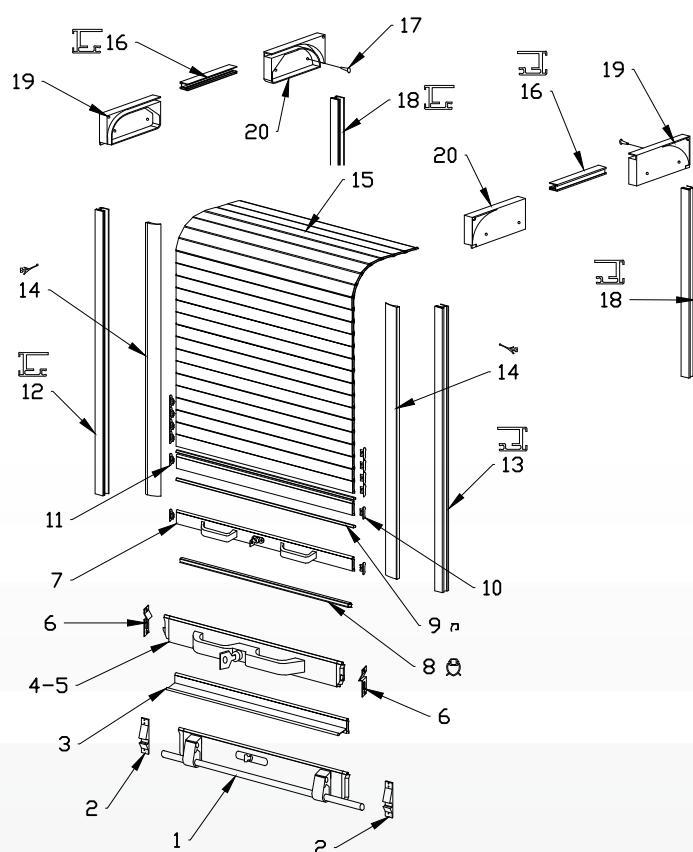
## ECO SIMPLY 1

### EXPLODED VIEW

Pos.	Description	Code
1	barlock with key	70180.00
2	aglas ( block )	7006
3	shutter's grasp profile	70169.00
4	closing with key	7101
5	closing without key	7102
6	aglas ( block )	7006
7	closing with handles	70189.00
8	little rubber leaf	7007
9	middle rubber	7023
10	right sliding block	7010
11	left sliding block	7025
12	left side guide	70200.01.01
13	right side guide	70200.01.02
14	rubber seal	7026
15	little shutter's profile	7024
16	upper guide	70200.01.04
17	fixing screws	70134.11
18	lateral plastic curve A	70200.02.01
19	lateral plastic curve B	70200.02.02



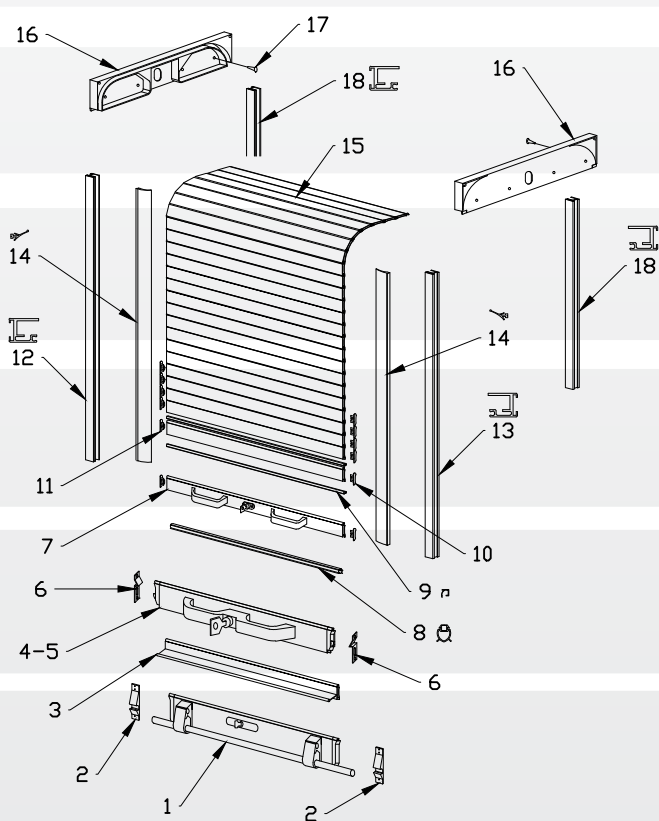




## ECO SIMPLY 2

### EXPLODED VIEW

Pos.	Description	Code
1	barlock with key	70180.00
2	aglas ( block )	7006
3	shutter's grasp profile	70169.00
4	closing with key	7101
5	closing without key	7102
6	aglas ( block )	7006
7	closing with handles	70189.00
8	little rubber leaf	7007
9	middle rubber	7023
10	right sliding block	7010
11	left sliding block	7025
12	left side guide	70200.01.01
13	right side guide	70200.01.02
14	rubber seal	7026
15	little shutter's profile	7024
16	upper guide	70200.01.04
17	fixing screws	70134.11
18	rear guide	70200.01.03
19	lateral plastic curve A	70200.02.01
20	lateral plastic curve B	70200.02.02



## ECO SIMPLY 3

### EXPLODED VIEW

Pos.	Description	Code
1	barlock with key	70180.00
2	aglas ( block )	7006
3	shutter's grasp profile	70169.00
4	closing with key	7101
5	closing without key	7102
6	aglas ( block )	7006
7	closing with handles	70189.00
8	little rubber leaf	7007
9	middle rubber	7023
10	right sliding block	7010
11	left sliding block	7025
12	left side guide	70200.01.01
13	right side guide	70200.01.02
14	rubber seal	7026
15	little shutter's profile	7024
16	lateral double plastic curve	70200.02.00
17	fixing screws	70134.11
18	rear guide	70200.01.03

# SRS ECO PLUS

The aluminium roller shutter mod. ECO PLUS is assembled with profiles H30 or H38, is realized with the required heights in extruded shapes and special characteristics and can be used for medium compartments, in substitution to troublesome leaf-doors. Usually the roller shutters are delivered silver anodized or RAL 7035 painted, or on demand painted in different RAL colours

## USEFUL AREA

Max. recommended area	1,5 m <sup>2</sup>
-----------------------	--------------------

The ECO PLUS shutters have a special wrapping roll Ø45, pre-set in accordance to the shutters dimensions and have special guides, as the ECO model. When open the shutter will lay flat horizontally under the roof and the eventual surplus length will lay vertically in the rear part.

This sliding system is recommended for areas of max. 1,5m2. Its characteristics are reliability, quality and design.

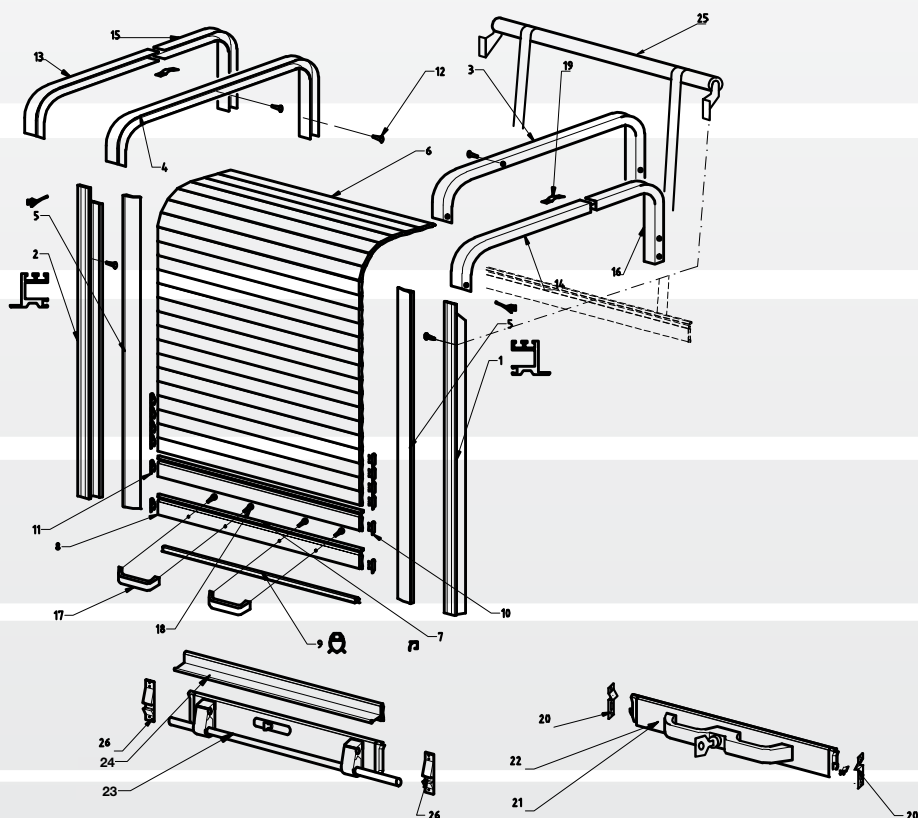
**The roller shutter will be delivered divided into parts, which can be easy assembled:**

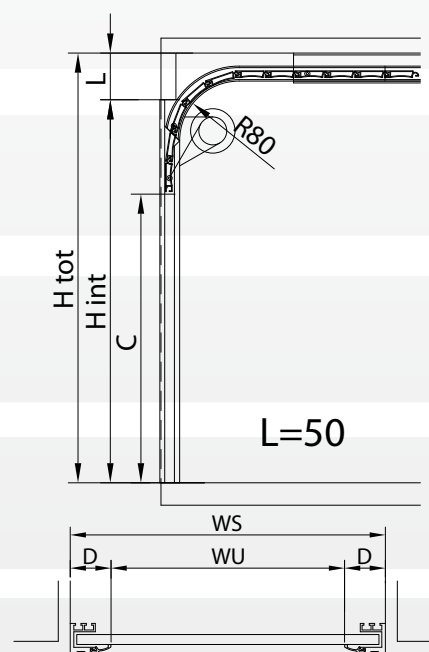
- 1 pre-assembled shutter complete with closing end with or without key
- 1 pair of vertical guides
- 2 pairs of curves (entire or separate)
- 2 eventual sliding extensions, to be put between the curves, when the curves are separate
- 1 box with accessories

**+ required optionals**

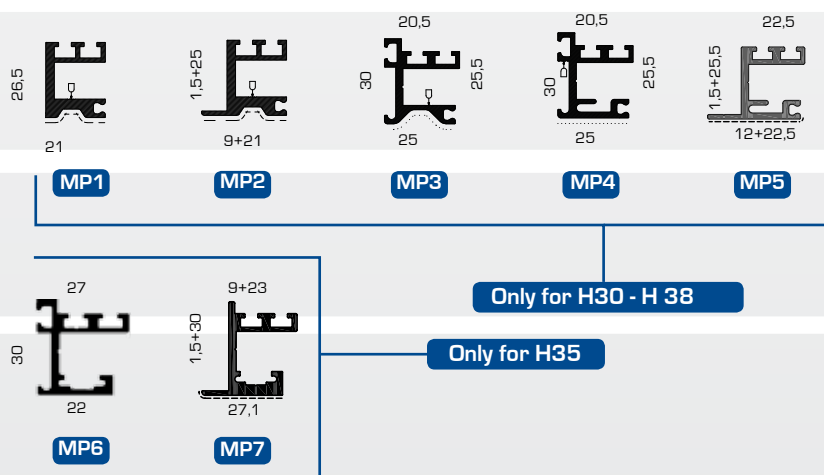
## EXPLODED VIEW

Pos.	Description	Code
1	right guide	70143.01
2	left guide	70143.02
3	right upper guide	70143.03
4	left upper guide	70143.04
5	side rubber profile	7026
6	shutter profile	7024
7	middle profile	7023
8	lower shutter profile	70143.08
9	lower rubber profile	7007
10	right sliding block	7010
11	left sliding block	7025
12	profiles fixing screws	70143.11
13	front left upper internal profile	70143.14
14	front right upper internal profile	70143.15
15	back left upper internal profile	70143.16
16	back right upper internal profile	70143.17
17	handles	70143.12
18	handle fixing screws	70143.13
19	stop spring	70143.18
20	locking	7006
21	closing group with key	7101
22	closing group without key	7102
23	barlock with key	70180.00
24	gripping profile	70169.00
25	roll group with supports	70167.01
26	locking	7006





## AVAILABLE MOUNTING PROFILES



### MEASUREMENTS

H tot	Total height
H int	Internal height
L	Sliding room
C	Light height
WU	Light width
WS	Total width
D	Guide and gasket edge

# SRS ECO PLUS SIMPLY

The aluminium roller shutter mod. ECO PLUS SIMPLY is assembled with profiles H30 or H38, is realized with the required heights in extruded shapes and special characteristics and can be used for medium compartments, in substitution to troublesome leaf-doors. Usually the roller shutters are delivered silver anodized or RAL 7035 painted, or on demand painted in different RAL colours

## USEFUL AREA

Max. recommended area	1,5 m <sup>2</sup>
-----------------------	--------------------

The ECO PLUS shutters have a special wrapping roll Ø45, pre-set in accordance to the shutters dimensions and have special guides, as the ECO model. When open the shutter will lay flat horizontally under the roof and the eventual surplus length will lay vertically in the rear part.

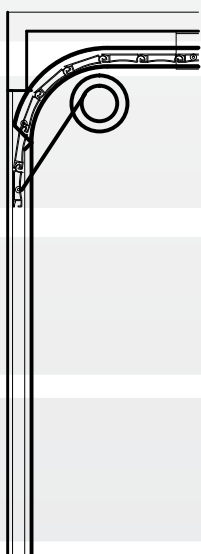
This sliding system is recommended for areas of max. 1,5m<sup>2</sup>. Its characteristics are reliability, quality and design.

**The roller shutter will be delivered divided into parts, which can be easy assembled:**

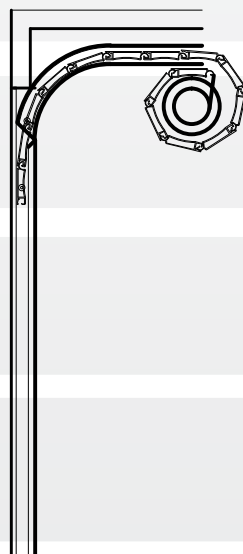
- 1 pre-assembled shutter complete with closing end with or without key
- 1 pair of vertical guides
- 2 pairs of plastic curves (entire or separate)
- 2 eventual sliding extensions, to be put between the curves, when the curves are separate
- 1 box with accessories

**+ required optionals**

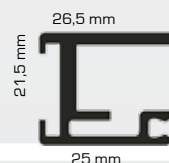
## ECO PLUS SIMPLY 1



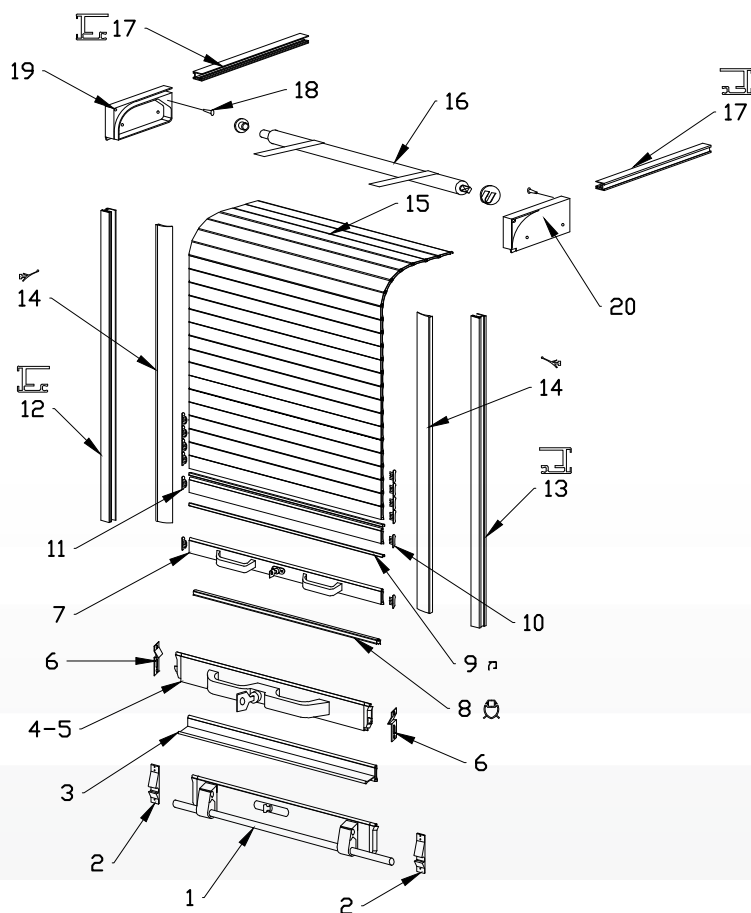
## ECO PLUS SIMPLY 2



**AVAILABLE  
MOUNTING  
PROFILE**



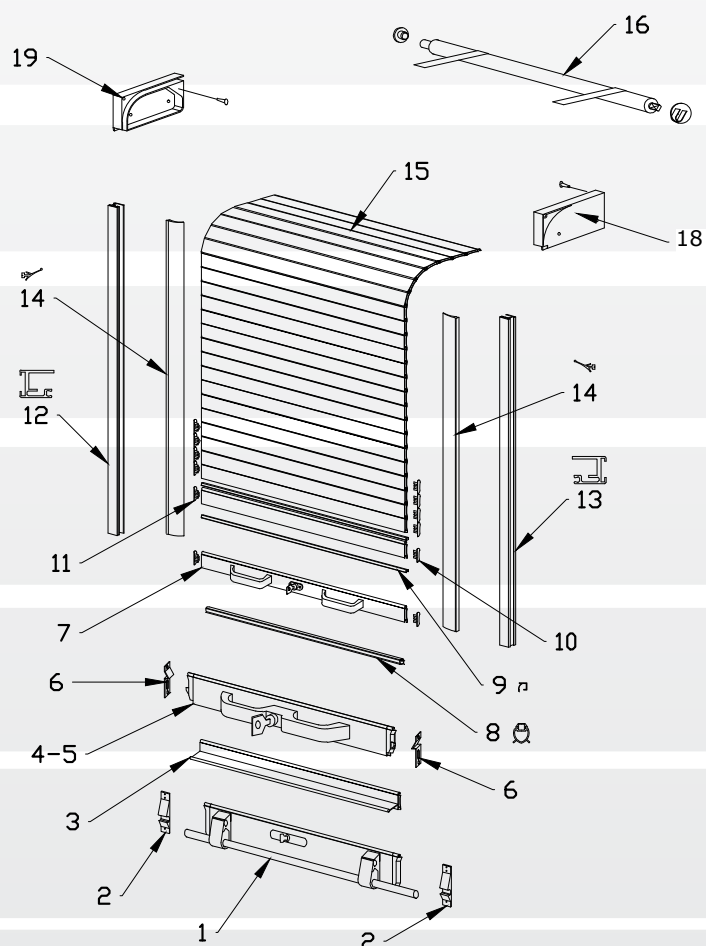




## ECO PLUS SIMPLY 1

### EXPLODED VIEW

Pos.	Description	Code
1	barlock with key	70180.00
2	aglas ( block )	7006
3	shutter's grasp profile	70169.00
4	closing with key	7101
5	closing without key	7102
6	aglas ( block )	7006
7	closing with handles	70189.00
8	little rubber leaf	7007
9	middle rubber	7023
10	right sliding block	7010
11	left sliding block	7025
12	left side guide	70200.01.01
13	right side guide	70200.01.02
14	rubber seal	7026
15	little shutter's profile	7024
16	group roll with the support	70167.01
17	upper guide	70200.01.04
18	fixing screws	70134.11
19	lateral plastic curve A	70200.02.01
20	lateral plastic curve B	70200.02.02



## ECO PLUS SIMPLY 2

### EXPLODED VIEW

Pos.	Description	Code
1	barlock with key	70180.00
2	aglas ( block )	7006
3	shutter's grasp profile	70169.00
4	closing with key	7101
5	closing without key	7102
6	aglas ( block )	7006
7	closing with handles	70189.00
8	little rubber leaf	7007
9	middle rubber	7023
10	right sliding block	7010
11	left sliding block	7025
12	left side guide	70200.01.01
13	right side guide	70200.01.02
14	rubber seal	7026
15	little shutter's profile	7024
16	group roll with support	70167.01
17	fixing screws	70134.11
18	lateral plastic curve A	70200.02.01
19	lateral plastic curve B	70200.02.02

**SRS TOP**

The aluminium roller shutter mod. TOP is assembled with profiles H30 or H38, is realized with the required heights in extruded shapes and special characteristics and can be used for the main compartments, in substitution to troublesome leaf-doors. Usually the roller shutters are delivered silver anodized or RAL 7035 painted, or on demand painted in different RAL colours.

USEFUL AREA	
Max. recommended area	5 m <sup>2</sup>
Width max.	2,5 m
Height max.	2,4 m
Width min.	0,45 m

The space-saving TOP shutters have a special wrapping roll Ø45 or Ø60, pre-set in accordance to the shutters dimensions.

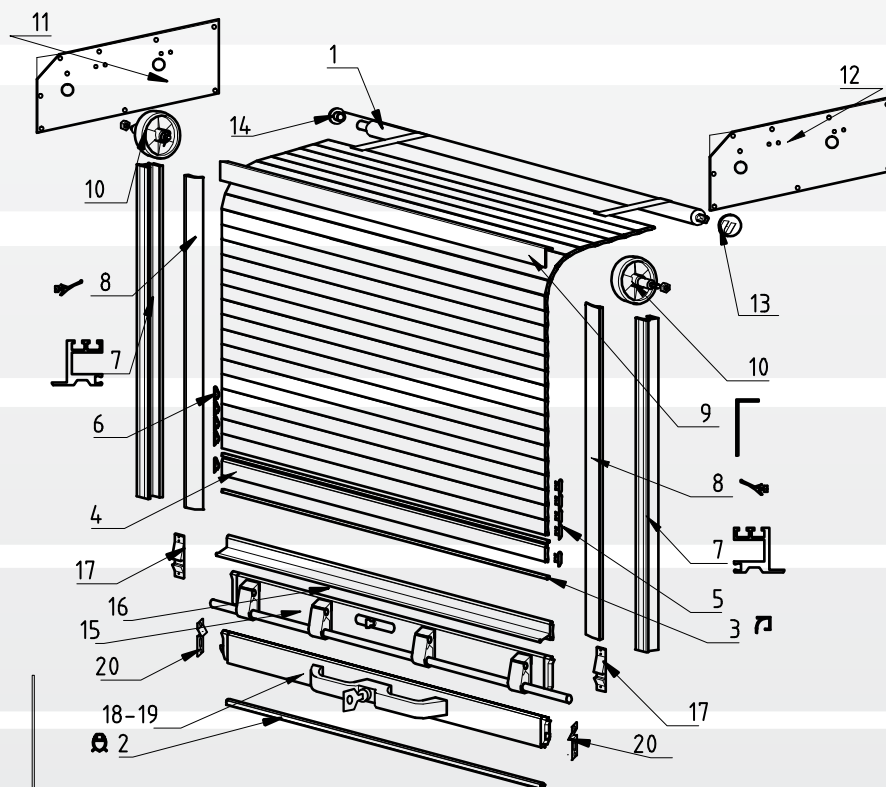
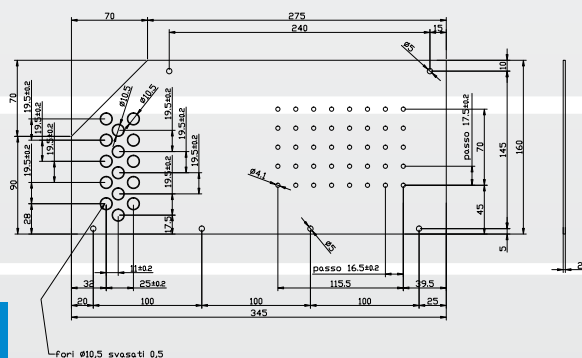
**The roller shutter will be delivered divided into parts, which can be easily assembled:**

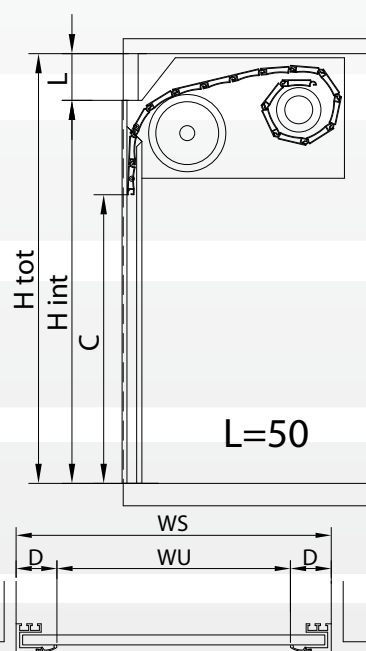
- 1 pre-assembled shutter complete with closing end with or without key
- 1 pair of vertical guides
- 1 pre-set wrapping roll
- 1 box with accessories

### + required optionals

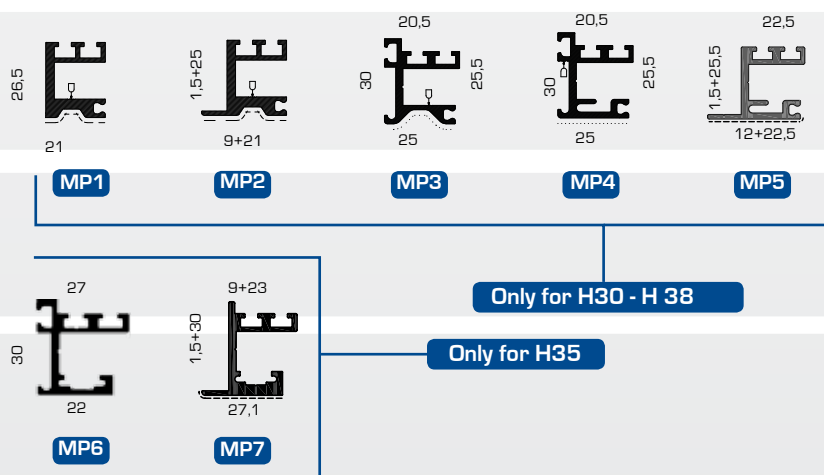
## EXPLODED VIEW

Pos.	Description	Code
1	roll group with holders	70136.03
2	little leaf rubber	7007
3	middle rubber	7023
4	shutter profile	7024
5	right sliding plate	7010
6	left sliding plate	7025
7	lateral guide	7003
8	seal rubber	7026
9	little cover	7027
10	wheel group	7104
11	left fixing plate	7028
12	right fixing plate	7029
13	roll space	70017
14	pin with bearing	70018
15	barlock with key	70180.00
16	grip profile	70169.00
17	locking	7006
18	closing group with key	7101
19	closing group without key	7102
20	locking	7006.1





## AVAILABLE MOUNTING PROFILES



MEASUREMENTS	
H tot	Total height
H int	Internal height
L	Sliding room
C	Light height
WU	Light width
WS	Total width
D	Guide and gasket edge





# SRS TOP READY MP5

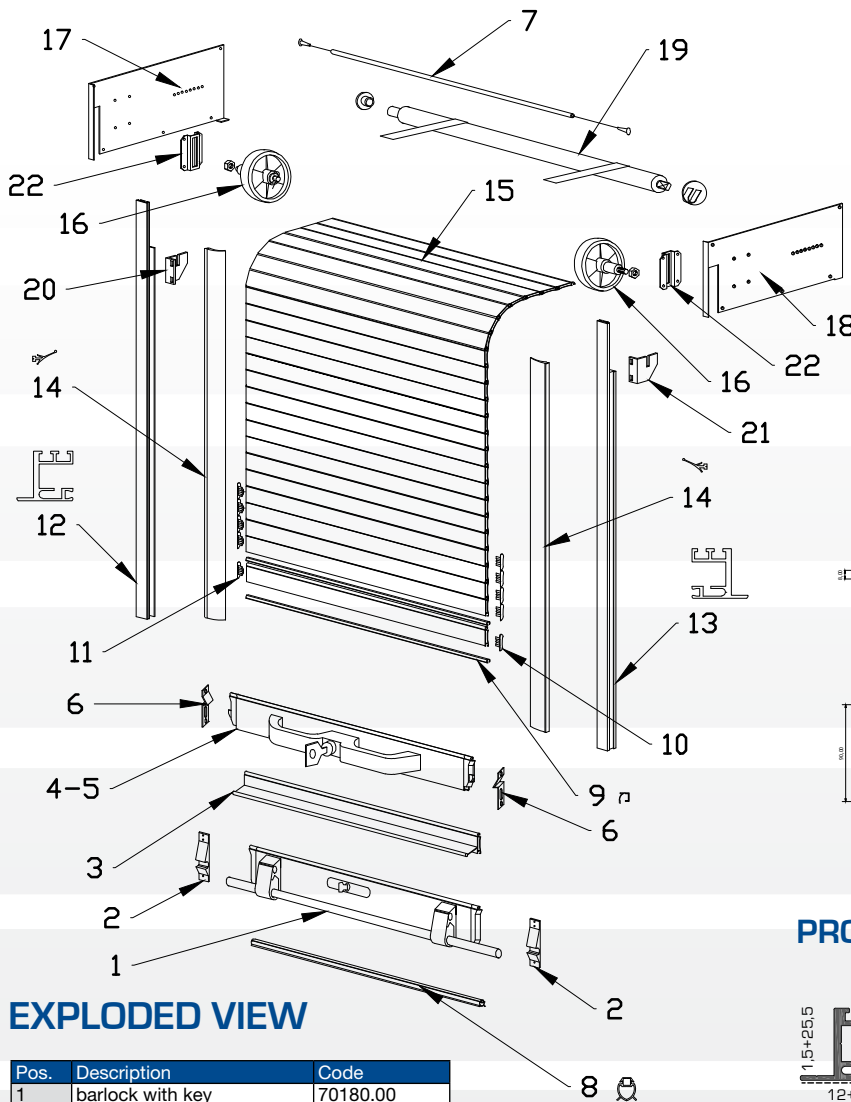
Only for H30 - H 38

The aluminium roller shutter mod. TOP is assembled with profiles H30 or H38, is realized with the required heights in extruded shapes and special characteristics and can be used for the main compartments, in substitution to troublesome leaf-doors. Usually the roller shutters are delivered silver anodized or RAL 7035 painted, or on demand painted in different RAL colours.

The roller shutter will be delivered in a single kit composed by:

pre-assembled kit: 1 shutter, 1 roll,  
 2 plates, 2 groups of wheel  
 - 1 pair of vertical guides  
 - 1 box with accessories

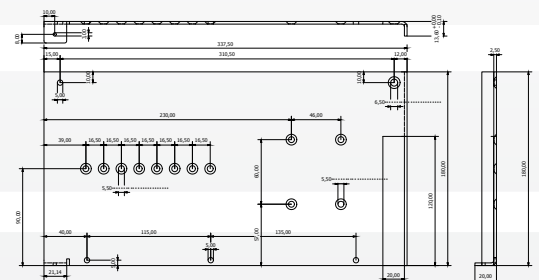
+ required optionals



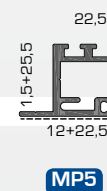
## EXPLODED VIEW

Pos.	Description	Code
1	barlock with key	70180.00
2	aglas ( blocks )	7006
3	shutter's grasp profile	70169.00
4	closing with key	7101
5	closing without key	7102
6	aglas ( block )	7006
7	connection	70202.02.00
8	little rubber leaf	7008
9	middle rubber	7023
10	sliding block right	7010
11	sliding block left	7025
12	left side guide	70203.01.01
13	right side guide	70203.01.02
14	rubber seal	7026
15	little shutter's profile	7024
16	group wheel	7104
17	left fixing plate	70203.02.01
18	right fixing plate	70203.02.02
19	rolls group with support	70167.01
20	reinforcement left	70202.03.01
21	reinforcement right	70202.03.02
22	spacer	70203.03.00

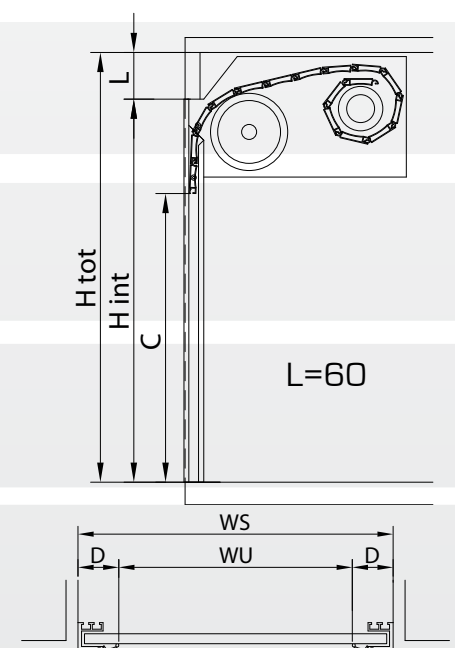
## MOUNTING PLATE



## PROFILE



MEASUREMENTS	
H tot	Total height
H int	Internal height
L	Sliding room
C	Light height
WU	Light width
WS	Total width
D	Guide and gasket edge



# SRS TOP XL

The TOP XL shutters are realized for big areas, but are also a good solution for areas until 7m<sup>2</sup>. They are very strong and have an increased closing part and wrapping roll and a special hooking system. They are mostly required for commercial and distribution vehicles.

The aluminium roller shutter mod. TOP XL is assembled with profiles H30 or H38, is realized with the required heights in extruded shapes and special characteristics and can be used for the main compartments, in substitution to the troublesome leaf-doors. Usually the roller shutters are delivered silver anodized or RAL 7035 painted, or on demand painted in different RAL colours. The space-saving TOP shutters have a special wrapping roll Ø45 or Ø60, pre-set in accordance to the shutters dimensions.

## USEFUL AREA

Max. recommended area	7 m <sup>2</sup>
Width max.	2,9 m
Height max.	2,5 m
Width min.	1,0 m

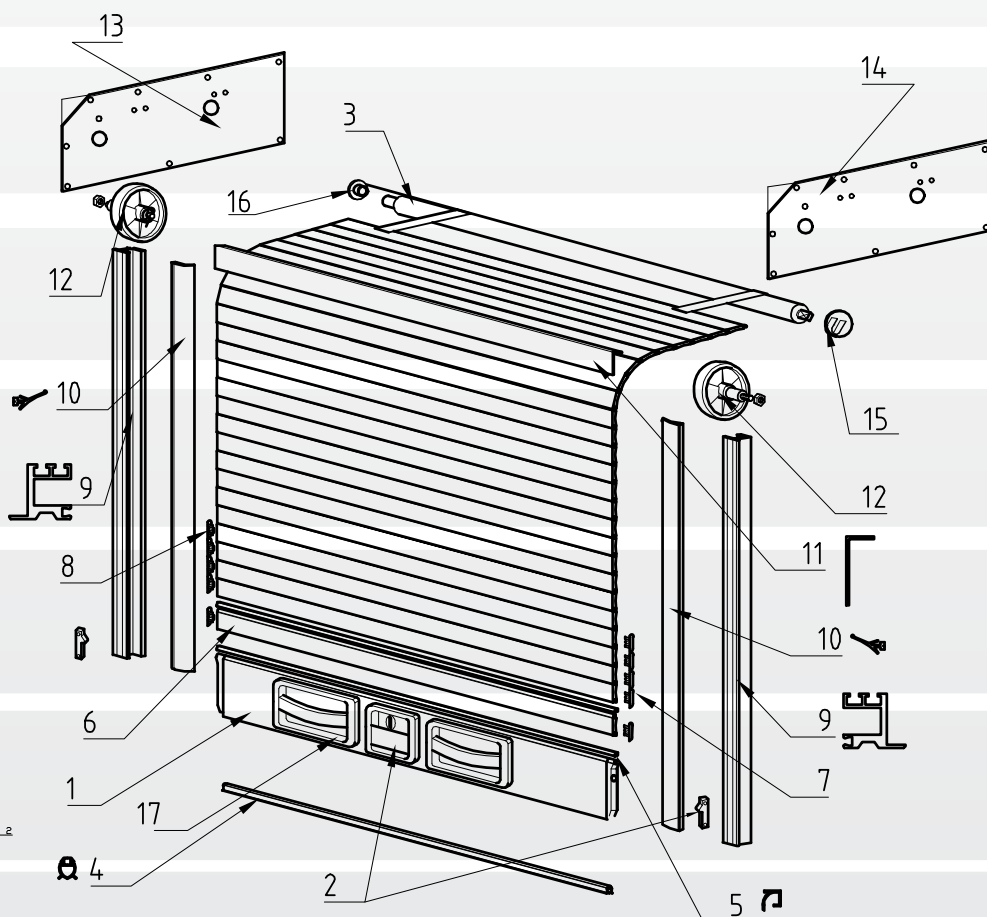
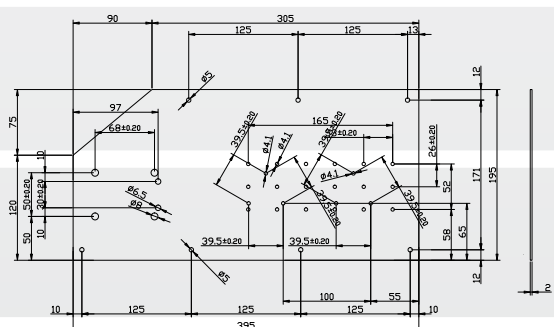
**The roller shutter will be delivered divided into parts, which can be easy assembled:**

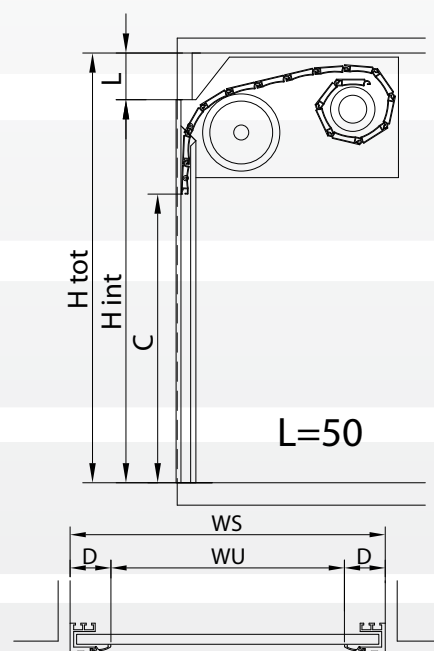
- 1 pre-assembled shutter complete with closing end with or without key
- 1 pair of vertical guides
- 1 pre-set wrapping roll
- 1 box with accessories

**+ required optionals**

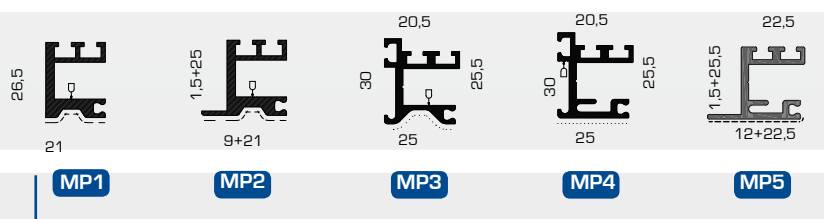
## EXPLODED VIEW

Pos.	Description	Code
1	closing group	70139.01
2	stainless steel locking group with 2 lockings	70380.34
3	roll group with holders	70139.03
4	leaf rubber	7007
5	middle rubber	7023
6	shutter profile	7024
7	right sliding plate	7010
8	left sliding plate	7025
9	lateral guide	7003
10	seal rubber	7026
11	little cover	7027
12	wheel group	7104
13	left fixing plate	7028
14	right fixing plate	7029
15	roll seat	70017
16	pin with bearing	70018
17	handle	70139





## AVAILABLE MOUNTING PROFILES



Only for H30 - H 38

### MEASUREMENTS

H tot	Total height
H int	Internal height
L	Sliding room
C	Light height
WU	Light width
WS	Total width
D	Guide and gasket edge

# SRS TOP XL-E

This roller shutter, with profile H30 or H38, is foreseen for large areas and special applications and can be integrated with a motor for the winding.

The motor is available in its standard version or with radio frequencies, different capacities, great features, low consumptions, small dimensions, available 12 -24 or 230V, depending on the model and requested features.

Similar to the rolling system of the TOP and TOP XL models, it has 2 different types of closing parts, without key lock. The closing ends can be loaded, in order to have an easier closing. It can be silver anodized or RAL 7035 painted, on demand a range of other RAL colours is available.

This solution is an innovation in the commercial, industrial and special vehicles field.

## USEFUL AREA

Max. recommended area	7 m <sup>2</sup>
Width max.	3,0 m
Height max.	2,8 m
Width min.	1,0 m

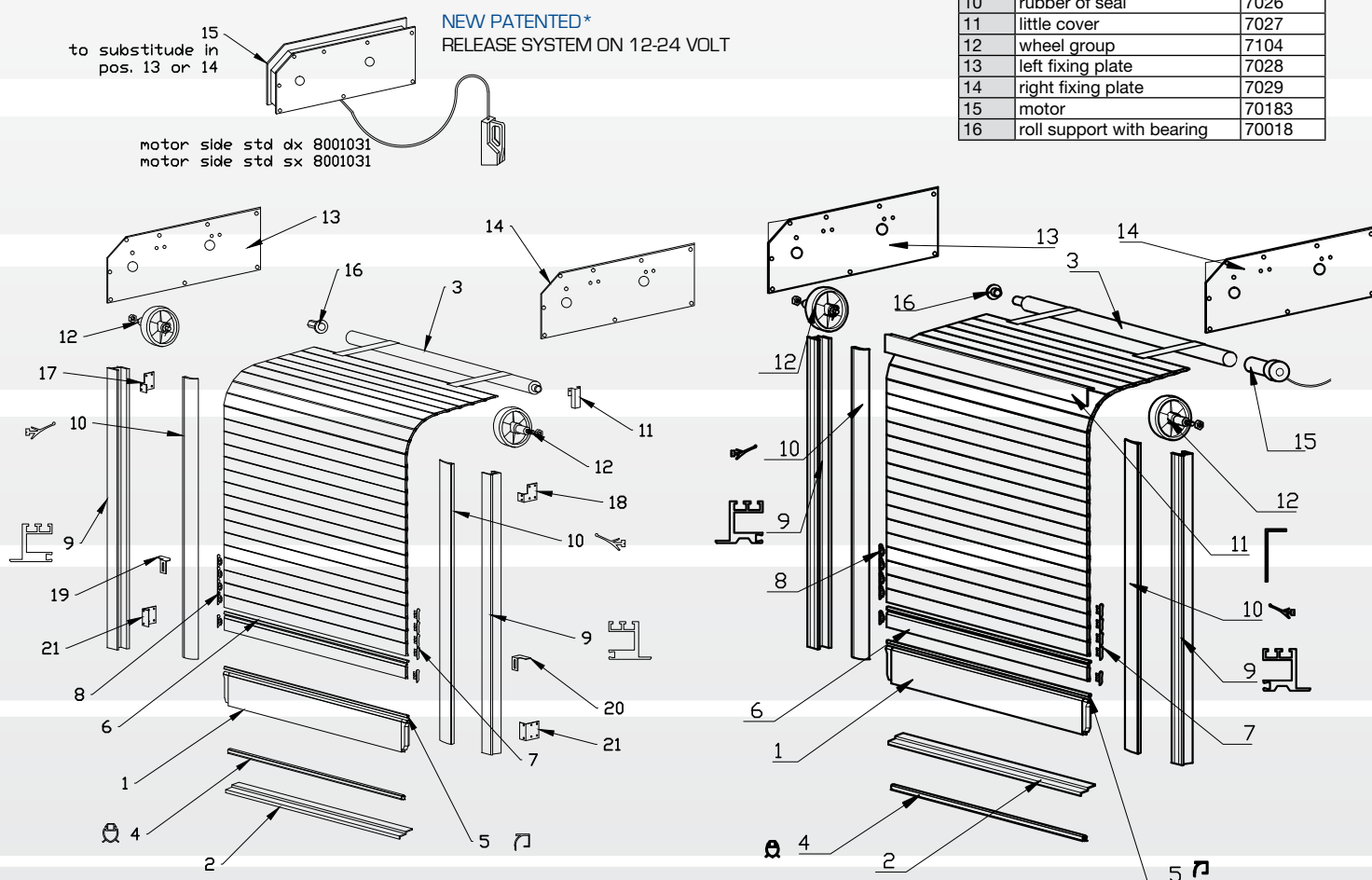
**The roller shutter will be delivered divided into parts, which can be easy assembled:**

- 1 pre-assembled shutter complete with closing end without locks
- 1 pair of vertical guides
- 1 box with accessories
- 1 winding roll
- 1 box with one motor, all the necessary accessories and mounting instructions for the motor

## + required optionals

## EXPLODED VIEW

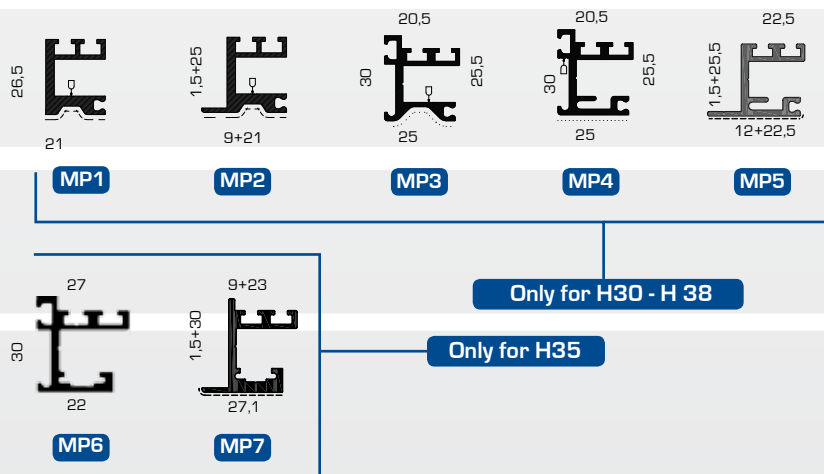
Pos.	Description	Code
1	end side	70140.01
2	profile of leaf	70140.00
3	rolls group with supports	70140.03
4	little rubber of leaf	7007
5	middle rubber	7023
6	roller shutter profile	7024
7	right sliding block	7010
8	left sliding block	7025
9	side guide	7003
10	rubber of seal	7026
11	little cover	7027
12	wheel group	7104
13	left fixing plate	7028
14	right fixing plate	7029
15	motor	70183
16	roll support with bearing	70018







## AVAILABLE MOUNTING PROFILES



MEASUREMENTS	
$H_{tot}$	Total height
$H_{int}$	Internal height
$L$	Sliding room
$C$	Light height
$WU$	Light width
$WS$	Total width
$D$	Guide and gasket edge



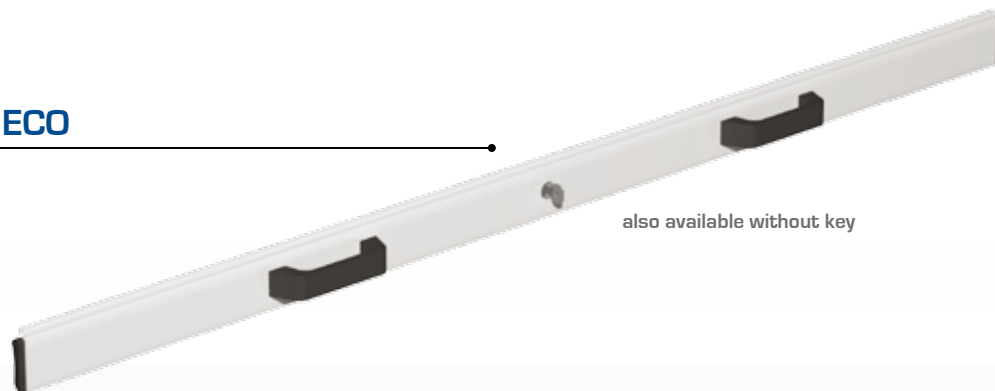
The SRS roller shutters can have different types of closing groups, according to the shutter model. They are available with or without key, made in extruded aluminium, with metallic and plastic mechanisms for the longest reliability; the shutters are automatically closed when pulled down.

### **T1** DESIGNED FOR: ECO

mounting profile compatibility

MP1 - MP2 - MP3 (h30 - h38)

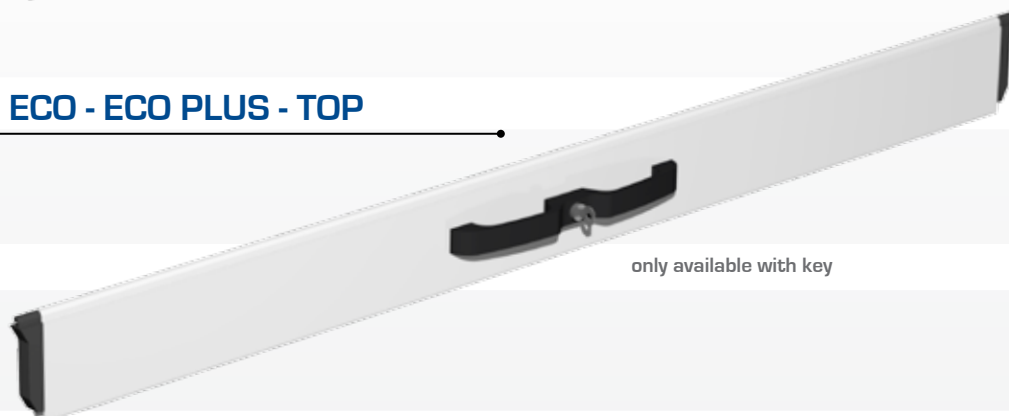
MP6 - MP7 (h35)



### **T2** DESIGNED FOR: ECO - ECO PLUS - TOP

mounting profile compatibility

MP1 - MP2 - MP3 (h30 - h38)



### **T3** DESIGNED FOR: ECO - ECO PLUS - TOP

mounting profile compatibility

MP4 - MP5 (h30 - h38)

MP6 - MP7 (h35)



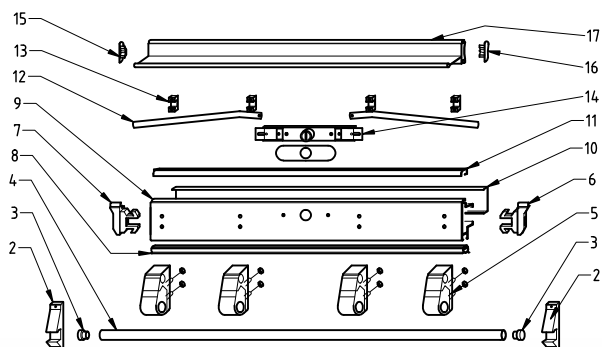
### **T4** DESIGNED FOR: TOP - TOP XL

mounting profile compatibility

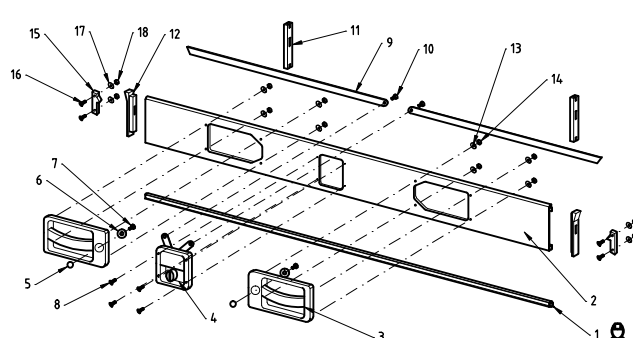
MP1 - MP2 - MP3 (h30 - h38)



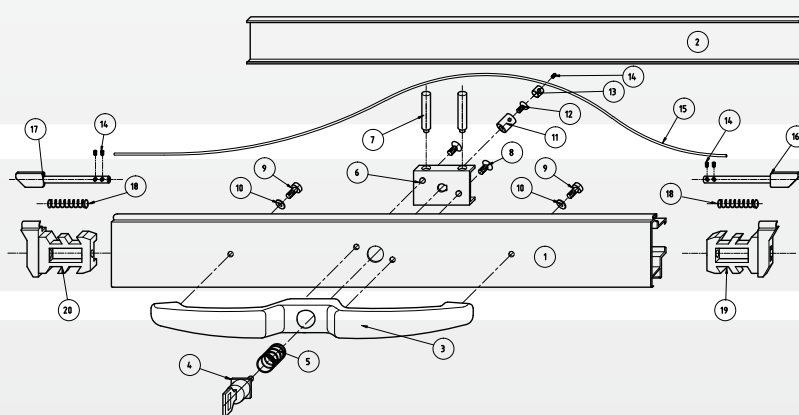
# CLOSING GROUPS



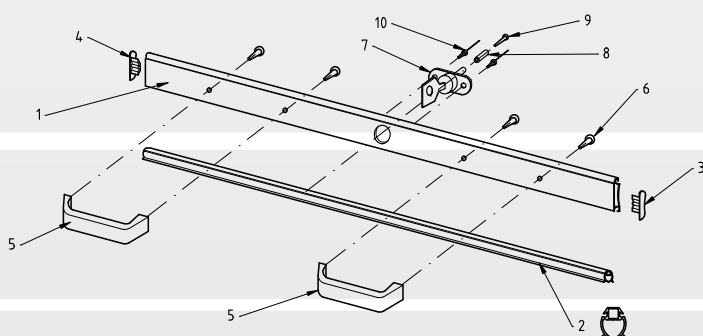
Pos.	Description	Code
1	barlock with key	70180.00
2	lower lock	70150.03
3	cap	70173.00
4	handle	70150.04
5	barlock block with spring	70170.00
6	right stick block	70171.dx
7	left stick block	70171.sx
8	lower rubber profile	70007.00
9	end profile	70002.00
10	back covering profile	70004.00
11	middle rubber	70023.00
12	closing sticks	70171.00
13	stick supports	70172.00
14	lock with key	70174.00
15	sliding plate h 38 left	70010.sx
16	sliding plate h 38 right	70010.dx
17	gripping profile	70169.00



Pos.	Description	Code
1	lower rubber profile	7007
2	closing-end profile	70191.01
3	handle	70139.04
4	stainless steel lock	70380.34
5	knob	70191.02
6	washer	70191.03
7	screw	70191.09
8	screw	70191.09
9	dead bolts	70191.05
10	screw	70191.09
11	guiding block	70191.10
12	end-group block	70191.11
13	washer	70191.12
14	nut	70191.13
15	lock	70191.14
16	screw	70191.15
17	washer	70191.16
18	nut	70191.17



Pos.	Description	Code
1	end profile	70002.00
2	cover profile	70004.00
3	handle	70116.00
4	lock with key	70035.00
5	button spring	70037.00
6	rolls holder	70116.02
7	rolls	70008.00
8	vtstc m6x10	comerc.
9	vtstc m6x10	comerc.
10	internal notched washer	uni 3704
11	string locking seat	70020.00
12	vtstc m5x5 tc	comerc.
13	string locking	70019.00
14	dowel m5x5 tc	comerc.
15	flexible string	70036.00
16	right closing	70005.dx
17	left closing	70005.sx
18	closing spring	70038.00
19	right closing	70001.dx
20	left closing	70001.sx



Pos.	Description	Code
1	lower profile	70143.08
2	rubber lower profile	7007
3	right sliding plate	7010
4	left sliding plate	7025
5	handles	70143.12
6	handle fixing screws	70143.13
7	block with key	70189.01
8	bush	70189.02
9	bush fixing screw	70189.03
10	rivets	70189.04



The aluminium extruded winding rolls are available in Ø45 or Ø60, in order to find a good solution for every room problem and are made with steel springs for the maximum toughness.

## ATTENTION: PRE-SET WRAPPING ROLL

### D45

In order to mount the roll, insert it into the proper supports, in the correct position, as indicated on the label on the roll itself.

The black band pointed out on the paper (right head-side of the roll) indicates the safety PIN position.

Place the roll with the safety pin (covered with a protection paper) so that it is positioned under the roll. Remove the protection paper, so that the safety pin will stick out of the roll.

Turn it manually in the loading direction and release it immediately. The loaded roll will wrap the straps and roll the shutter.

**DON'T REMOVE THE SAFETY PIN UNTIL THE COMPLETE ROLLER SHUTTER HAS BEEN MOUNTED.**

In case the roll gets unloaded before the mounting of the roller shutter has been completed, load it again following the loading direction and number of turns indicated on the roll, block it and insert the safety pin.

Repeat again all the previous points.

### D45 for ECO PLUS

In order to mount the roll, insert it into the proper supports, in the correct position, as indicated on the label on the roll itself.

Fix the straps on the internal part of the last profile (profile with the rubber profile).


Place the roll with the safety pin (covered with a protection paper) so that it is positioned under the roll. Remove the protection paper, so that the safety pin will stick out of the roll.

Turn it manually in the loading direction and release it immediately. The loaded roll will wrap the straps and roll the shutter.


**DON'T REMOVE THE SAFETY PIN UNTIL THE COMPLETE ROLLER SHUTTER HAS BEEN MOUNTED.**

In case the roll gets unloaded before the mounting has been completed, load it again following the loading direction and number of turns indicated on the roll, block it and insert the safety pin.

Repeat again all the previous points.

Roller Shutter / Serranda Avvolgibile			
For Dim. / Per Vano	W	x H	mm
<hr/>			
Roll. / Rullo	W	N°	revs/giri
<small>Pre loaded / Precaricato</small>			
<hr/>			
SX HOLDER	ROLL / RULLO	DX HOLDER	
			
<small>BOTTOM SIDE / PARTE INFERIORE</small>			

TO LOAD  
PER CARICARE



# ROLLS



## D60

In order to mount the wrapping roll, place it into the proper supports in the correct position, like indicated (right side, seen from outside the vehicle)

The black band pointed out on the paper (right head-side of the roll) indicates the safety PIN position.


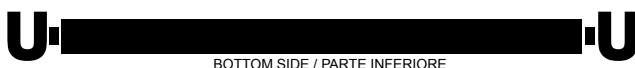
Place the roll with the safety pin (covered with a protection paper) so that it is positioned under the roll. Remove the protection paper, the safety pin will stick out of the roll.

**DON'T REMOVE THE SAFTEY PIN UNTIL THE COMPLETE ROLLER SHUTTER HAS BEEN MOUNTED.**

In case the roll gets unloaded before the mounting has been completed, load it again following the loading direction and number of turns indicated on the roll, block it and insert the safety pin.

Repeat again all the previous points.

Don't load the roll in the wrong direction, as it will cause the irreparably damage of the roll (that has to be replaced).

Roller Shutter / Serranda Avvolgibile				
For Dim. / Per Vano	W	x H	mm	TO LOAD PER CARICARE 
<hr/>				
Roll. / Rullo	W	N°	revs/giri	
<hr/>				
Pre loaded / Precaricato				
<hr/>				
SX HOLDER	ROLL / RULLO		DX HOLDER	
				
BOTTOM SIDE / PARTE INFERIORE				





The high quality profiles, with special shape, can be standard silver satin-finished anodized or powder-painted in RAL 7035 and can have heights from 30mm to 38mm. On demand the painting can be made in more than 150 RAL colours.



# FINISHING



There are many different available types of accessories.



PULLING BELT



ELECTROMAGNETIC SWITCH 12v or 24v

MAGNET MOUNTING



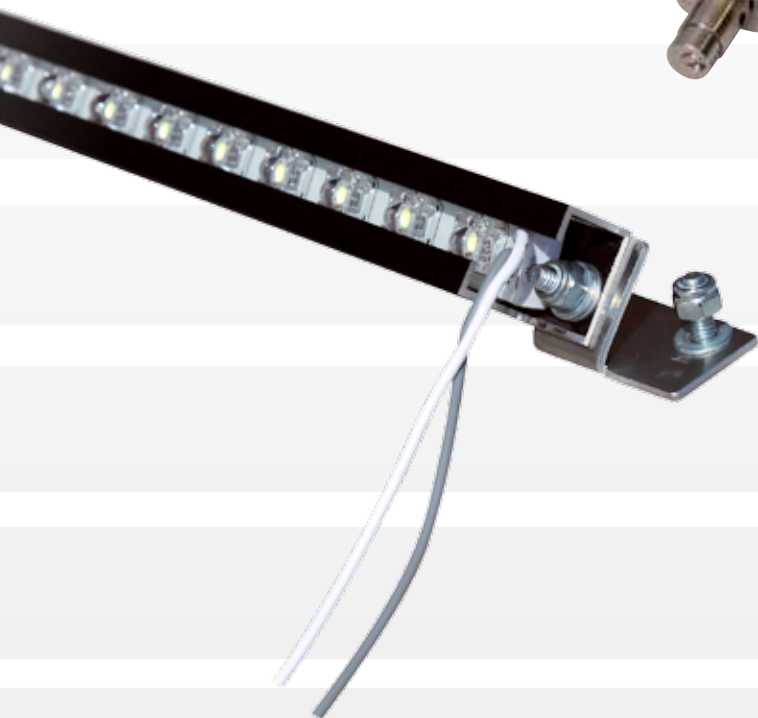


# ACCESSORIES

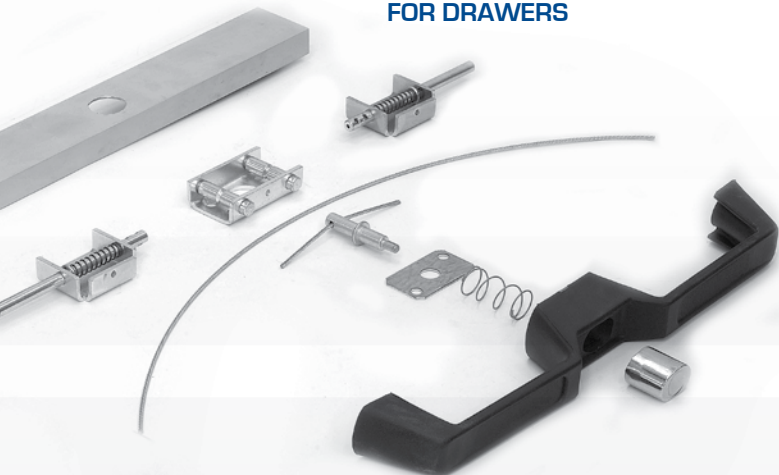
PRESSURE CLOSING GROUP  
WITH KEY FOR MODELL ECO



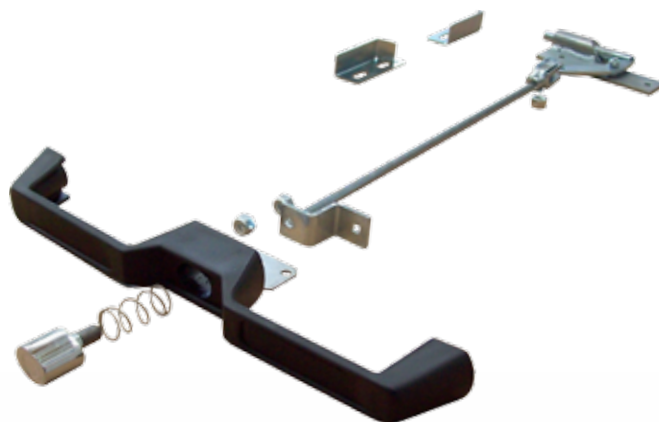
LIGHTS - NEON - LED



**OPENING/CLOSING GROUP  
FOR DRAWERS**



**OPENING/CLOSING GROUP  
FOR SLIDES**



**UNIVERSAL KEY LOCK FOR  
SHUTTERS AND TRUCK DOORS**



**ALUMINIUM AND  
STAINLESS STEEL  
LADDERS**



**LADDER HOLDERS**



**ALUMINIUM DRAWER**





# OTHER PRODUCTS



HANDRAILS



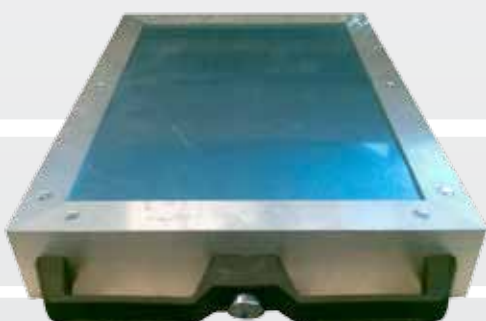
ZINC-COATED SLIDES

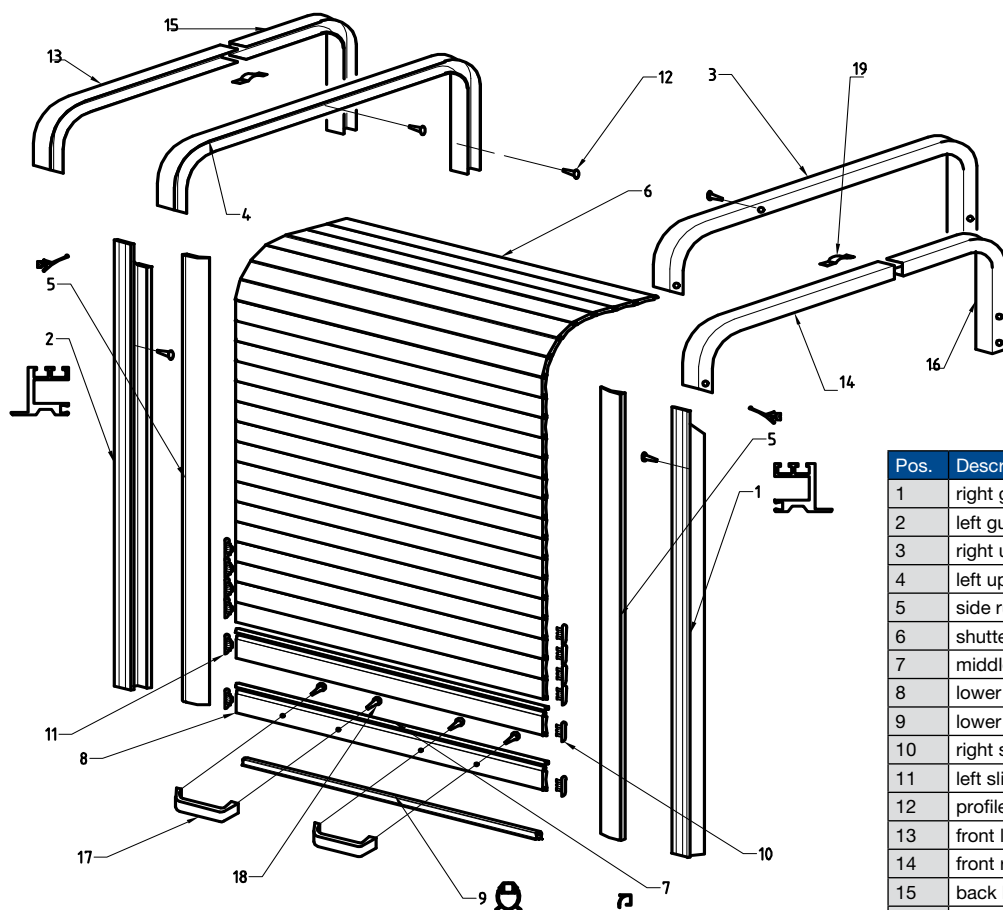
HOLDER FOR  
SELF-BREATHING APPARATUS



HOSE DEVIDERS

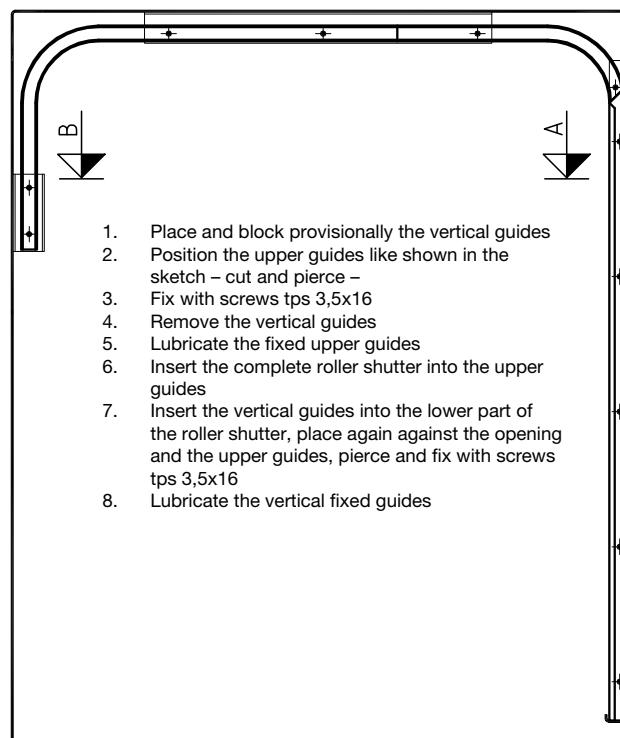
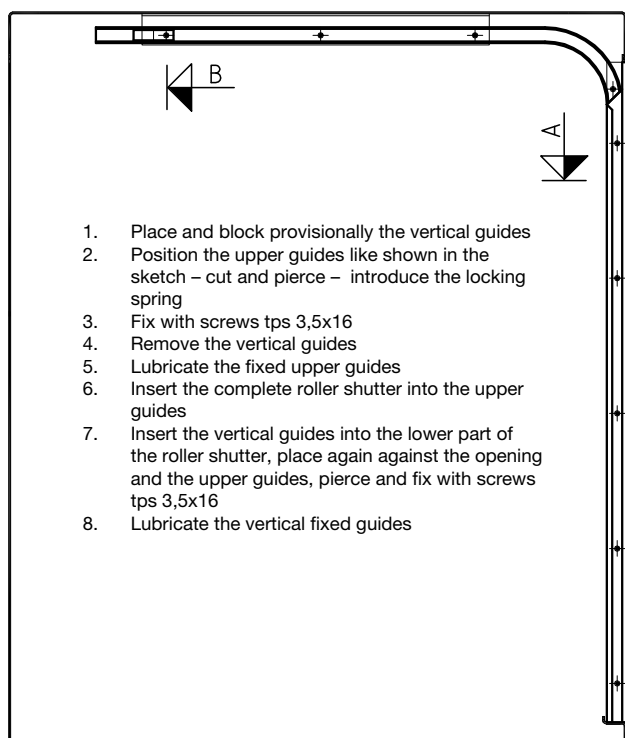
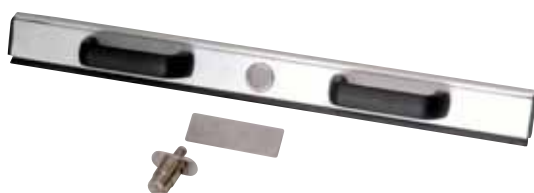
ALUMINIUM SLIDES

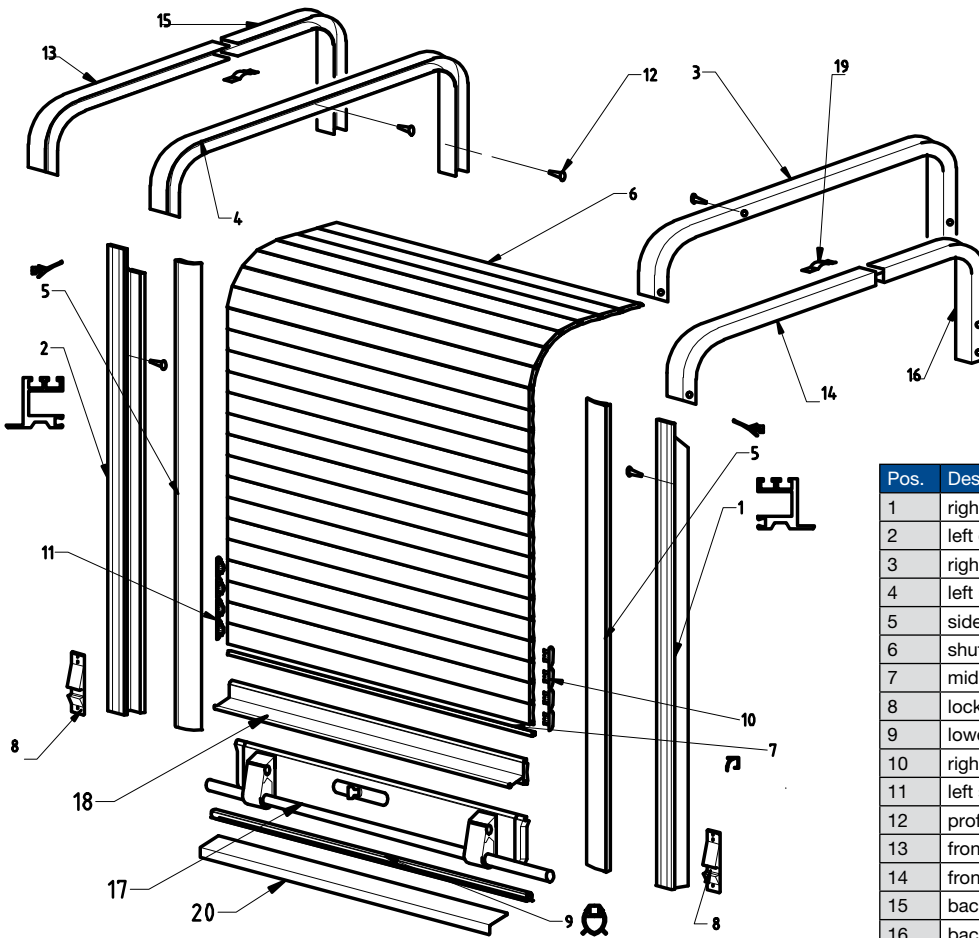




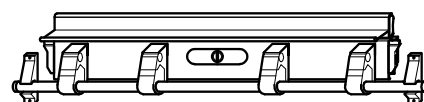
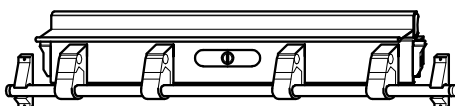
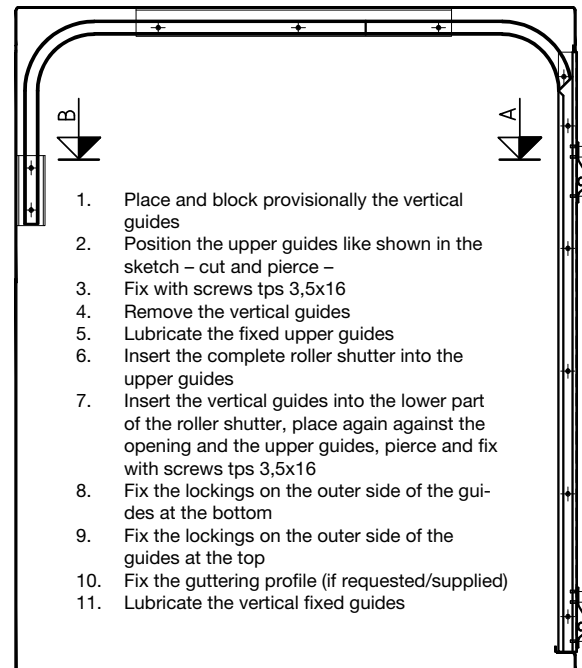
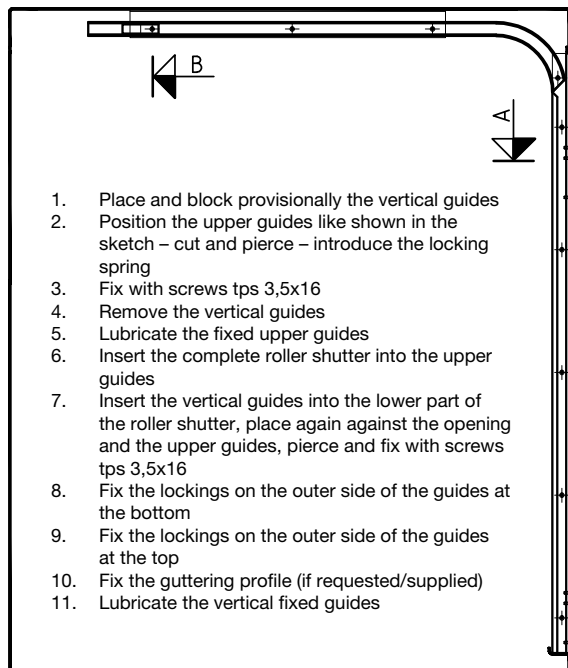
Pos.	Description	Code
1	right guide	70143.01
2	left guide	70143.02
3	right upper guide	70143.03
4	left upper guide	70143.04
5	side rubber profile	7026
6	shutter profile	7024
7	middle profile	7023
8	lower shutter profile	70143.08
9	lower rubber profile	7007
10	right sliding block	7010
11	left sliding block	7025
12	profiles fixing screws	70134.11
13	front left upper profile	70143.14
14	front right upper profile	70143.15
15	back left upper profile	70143.16
16	back right upper profile	70143.17
17	handles	70143.12
18	handle fixing screws	70143.13
19	stop spring	70143.18

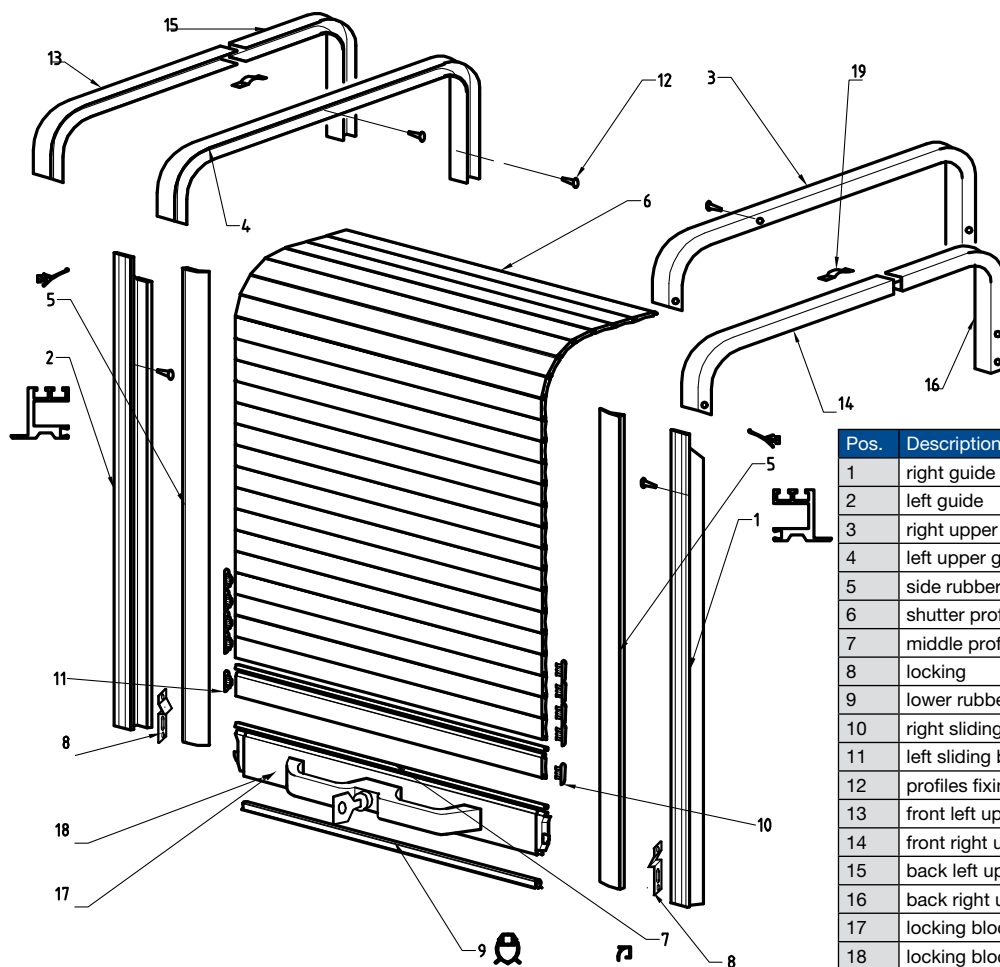
In case of pressure closing group with key, place the fixing plate in order that the hole is in correspondence with the key lock pin. If necessary the plate has to be cut accordingly.



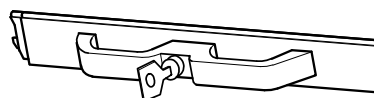
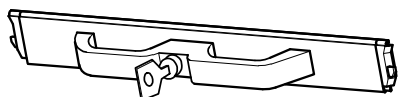
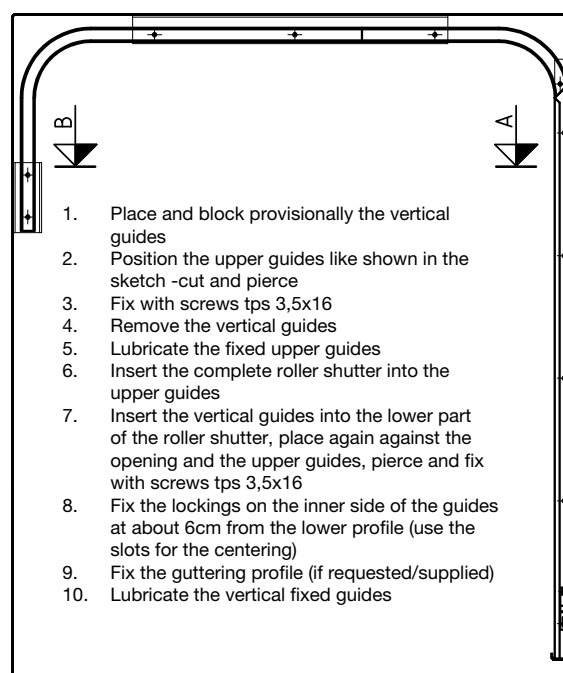
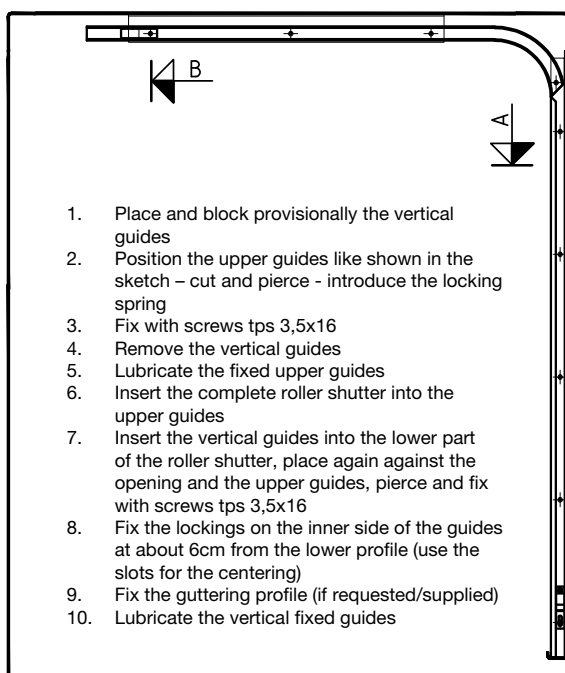


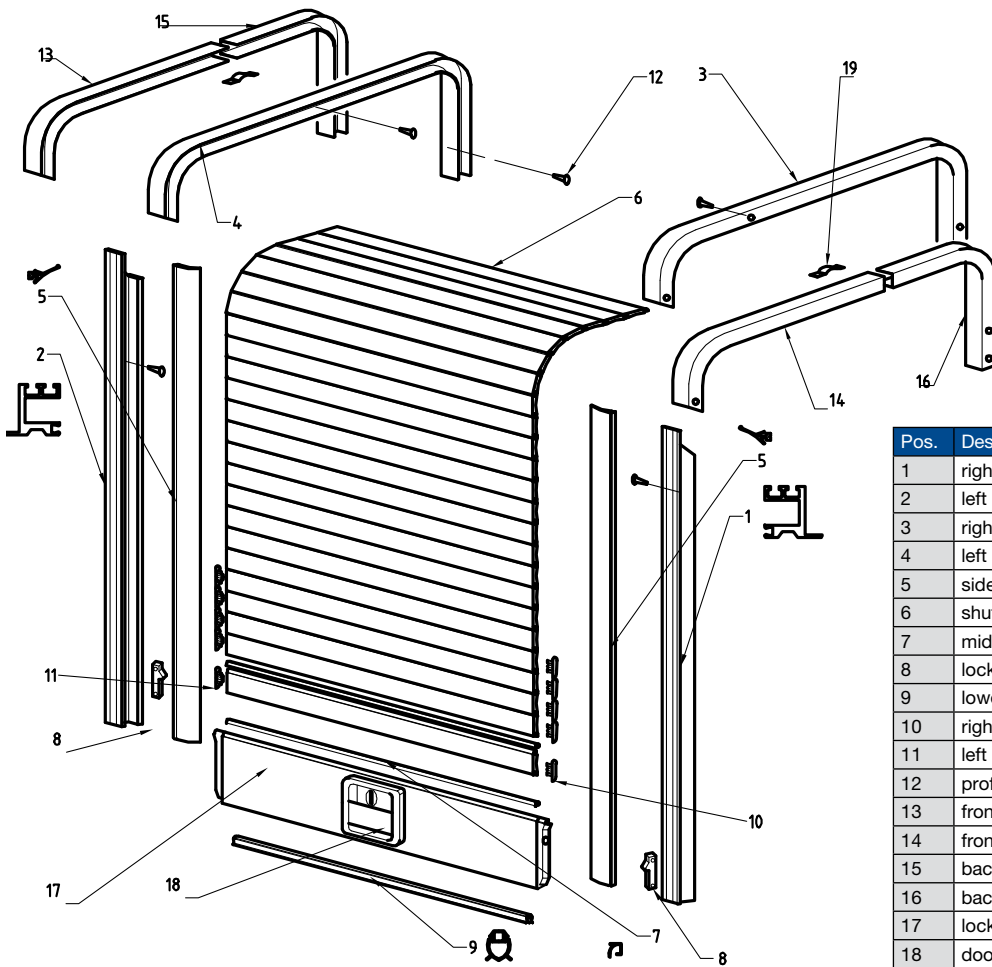
Pos.	Description	Code
1	right guide	70143.01
2	left guide	70143.02
3	right upper guide	70143.03
4	left upper guide	70143.04
5	side rubber profile	7026
6	shutter profile	7006
7	middle profile	7023
8	locking	7006
9	lower rubber profile	7007
10	right sliding block	7010
11	left sliding block	7025
12	profiles fixing screws	70134.11
13	front left upper internal profile	70143.14
14	front right upper internal profile	70143.15
15	back left upper internal profile	70134.16
16	back right upper internal profile	70134.17
17	barlock with key	70180.00
18	grip profile	70169.00
19	stop spring	70143.18
20	lower profile	70014.00



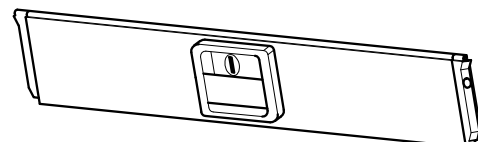
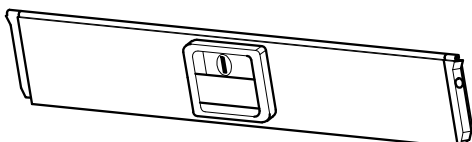
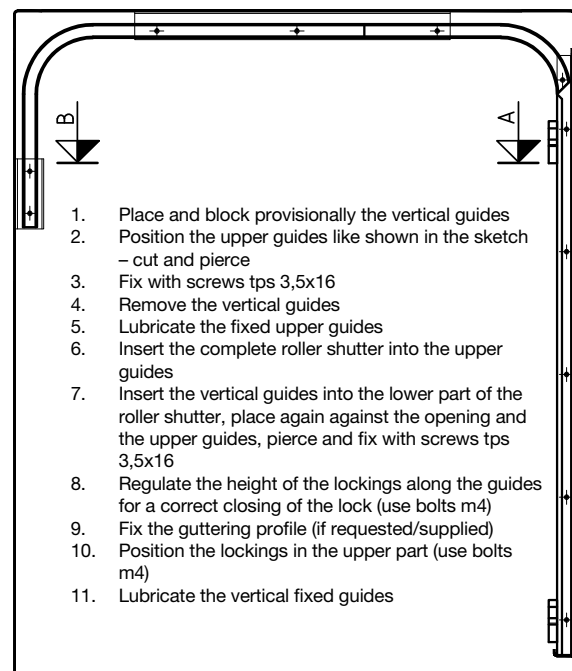
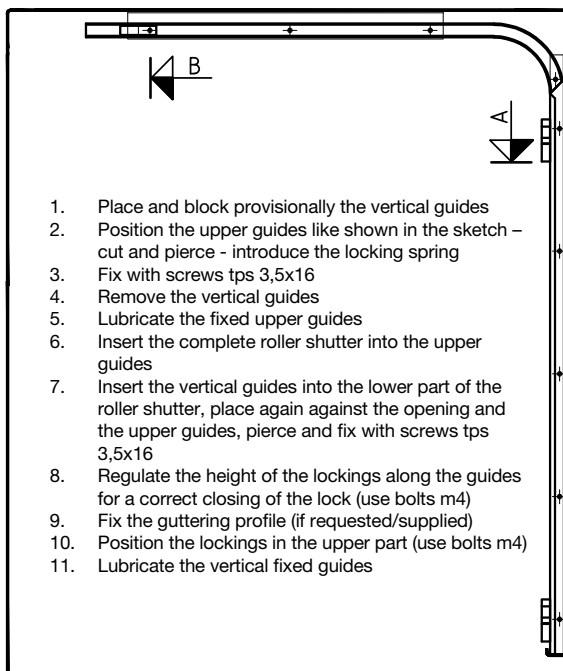


Pos.	Description	Code
1	right guide	70143.01
2	left guide	70143.02
3	right upper guide	70143.03
4	left upper guide	70143.04
5	side rubber profile	7026
6	shutter profile	7024
7	middle profile	7023
8	locking	7006
9	lower rubber profile	7007
10	right sliding block	7010
11	left sliding block	7025
12	profiles fixing screws	70134.11
13	front left upper profile	70134.14
14	front right upper profile	70134.15
15	back left upper profile	70134.16
16	back right upper profile	70134.17
17	locking block with key	7101
18	locking block without key	7102
19	stop spring	70148.18

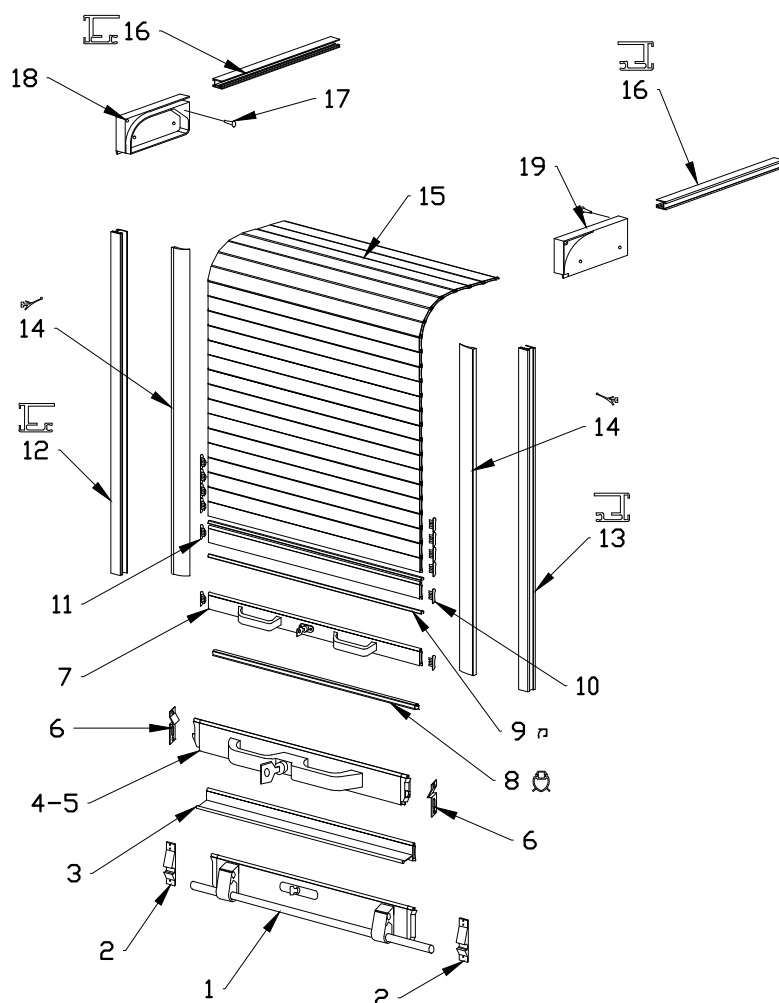




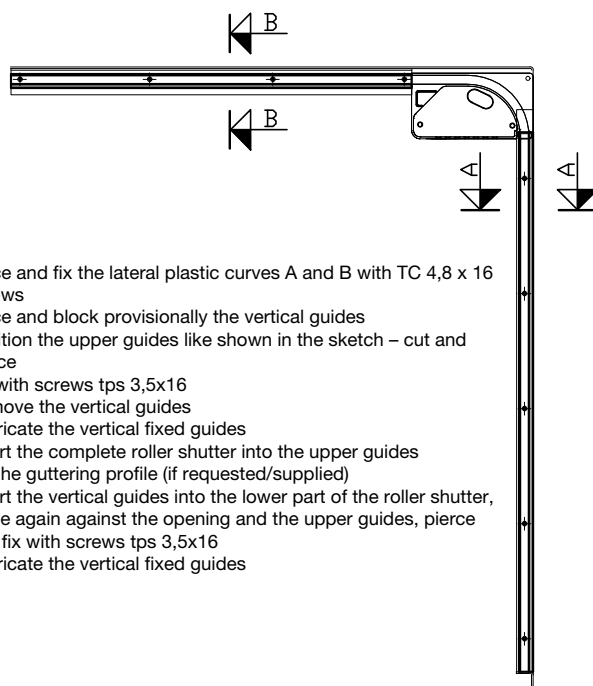
Pos.	Description	Code
1	right guide	70143.01
2	left guide	70143.02
3	right upper guide	70143.03
4	left upper guide	70143.04
5	side rubber profile	7026
6	shutter profile	7024
7	middle profile	7023
8	locking	7006
9	lower rubber profile	7007
10	right sliding block	7010
11	left sliding block	7025
12	profiles fixing screws	70134.11
13	front left upper profile	70134.14
14	front right upper profile	70134.15
15	back left upper profile	70134.16
16	back right upper profile	70134.17
17	locking block	70139.01
18	door lock	70380.34
19	stop spring	70143.18



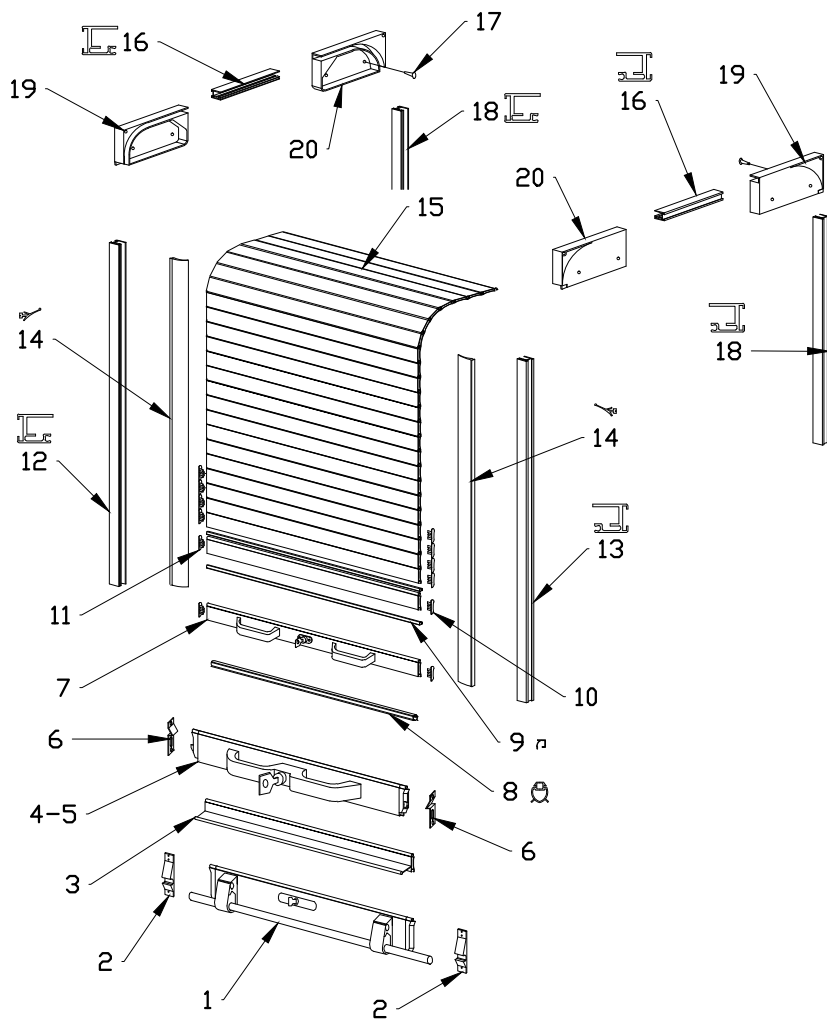




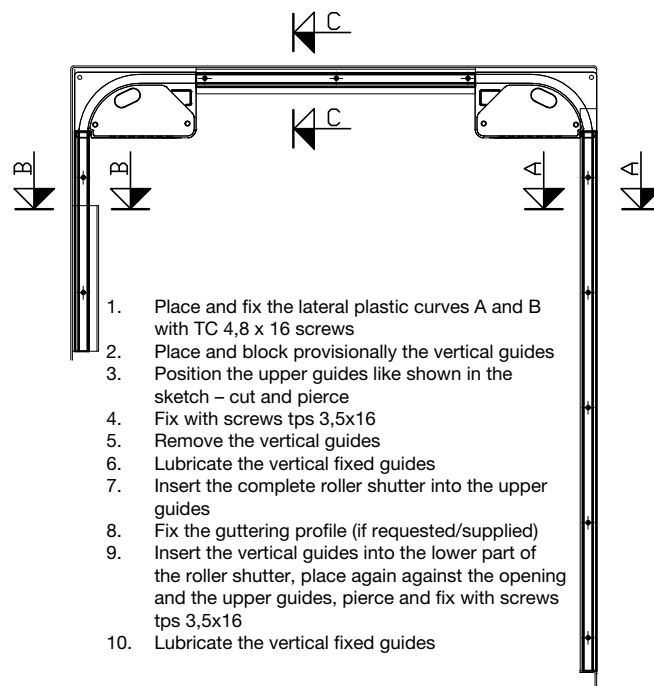
Pos.	Description	Code
1	barlock with key	70180.00
2	aglas ( block )	7006
3	shutter's grasp profile	70169.00
4	closing with key	7101
5	closing without key	7102
6	aglas ( block )	7006
7	closing with handles	70189.00
8	little rubber leaf	7007
9	middle rubber	7023
10	right sliding block	7010
11	left sliding block	7025
12	left side guide	70200.01.01
13	right side guide	70200.01.02
14	rubber seal	7026
15	little shutter's profile	7024
16	upper guide	70200.01.04
17	fixing screws	70134.11
18	lateral plastic curve A	70200.02.01
19	lateral plastic curve B	70200.02.02

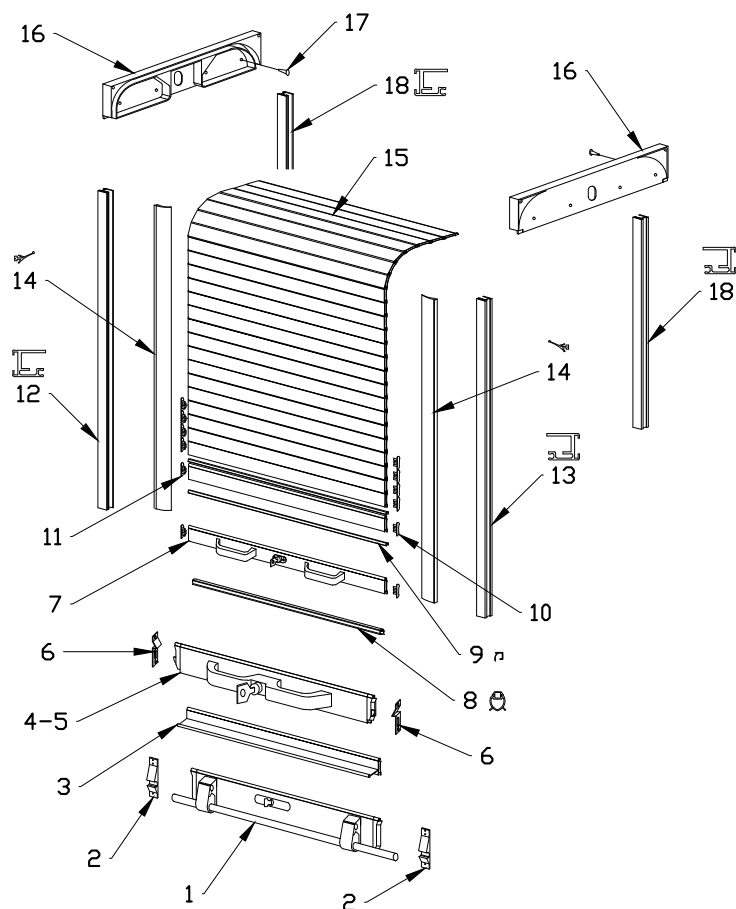


1. Place and fix the lateral plastic curves A and B with TC 4,8 x 16 screws
2. Place and block provisionally the vertical guides
3. Position the upper guides like shown in the sketch – cut and pierce
4. Fix with screws tps 3,5x16
5. Remove the vertical guides
6. Lubricate the vertical fixed guides
7. Insert the complete roller shutter into the upper guides
8. Fix the guttering profile (if requested/supplied)
9. Insert the vertical guides into the lower part of the roller shutter, place again against the opening and the upper guides, pierce and fix with screws tps 3,5x16
10. Lubricate the vertical fixed guides

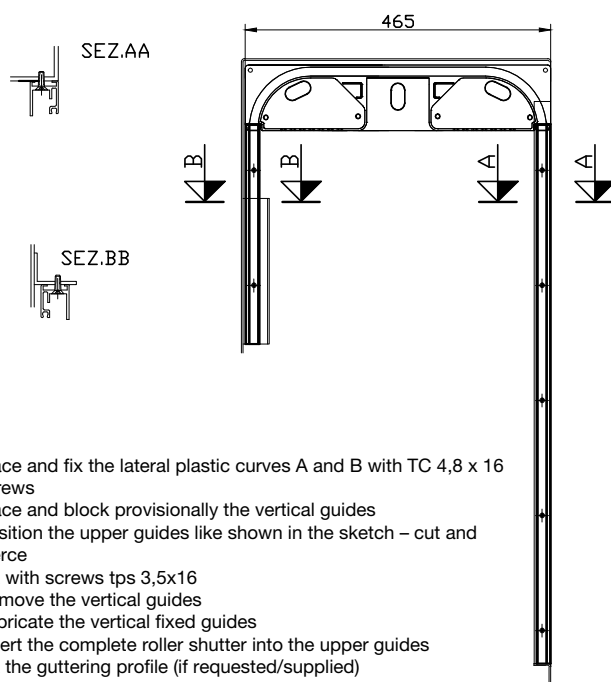


Pos.	Description	Code
1	barlock with key	70180.00
2	aglas ( block )	7006
3	shutter's grasp profile	70169.00
4	closing with key	7101
5	closing without key	7102
6	aglas ( block )	7006
7	closing with handles	70189.00
8	little rubber leaf	7007
9	middle rubber	7023
10	right sliding block	7010
11	left sliding block	7025
12	left side guide	70200.01.01
13	right side guide	70200.01.02
14	rubber seal	7026
15	little shutter's profile	7024
16	upper guide	70200.01.04
17	fixing screws	70134.11
18	rear guide	70200.01.03
19	lateral plastic curve A	70200.02.01
20	lateral plastic curve B	70200.02.02

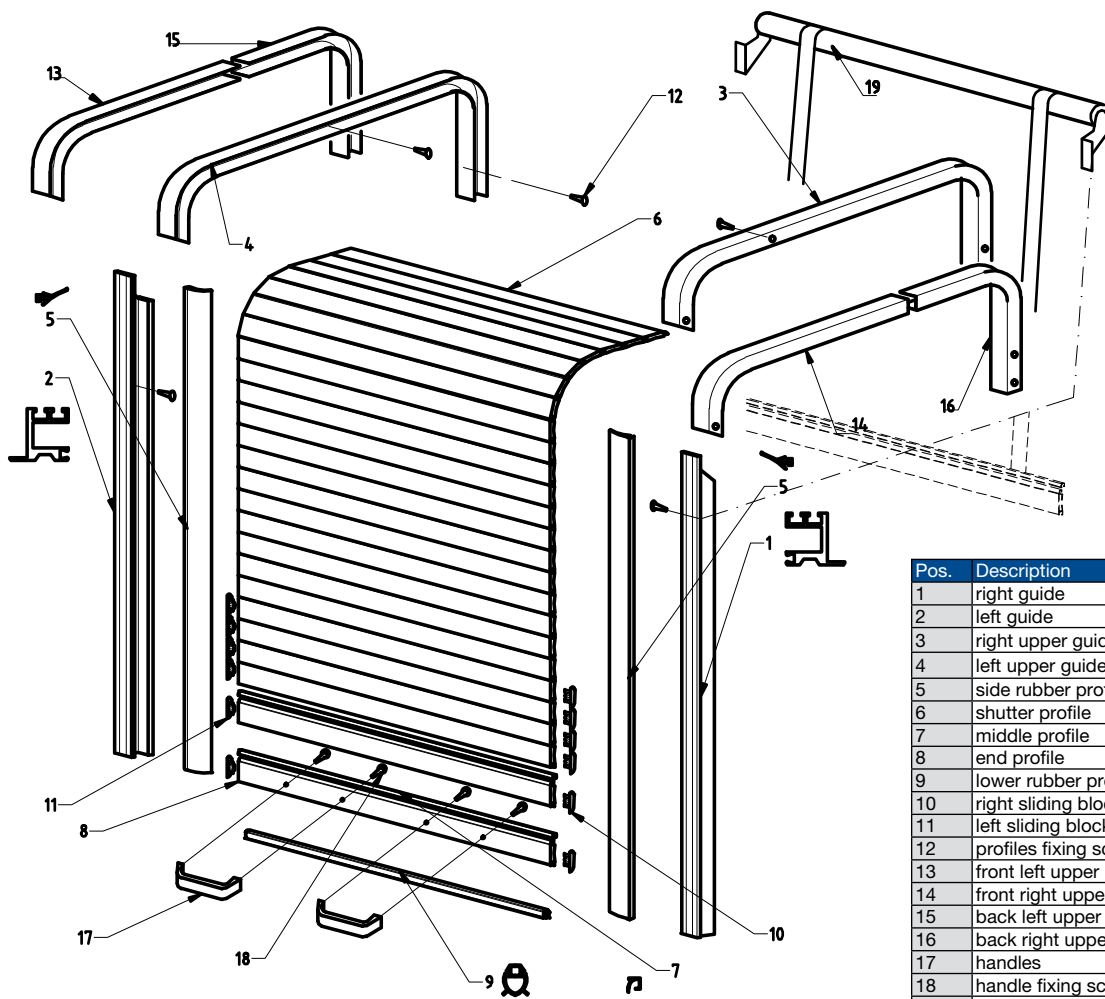




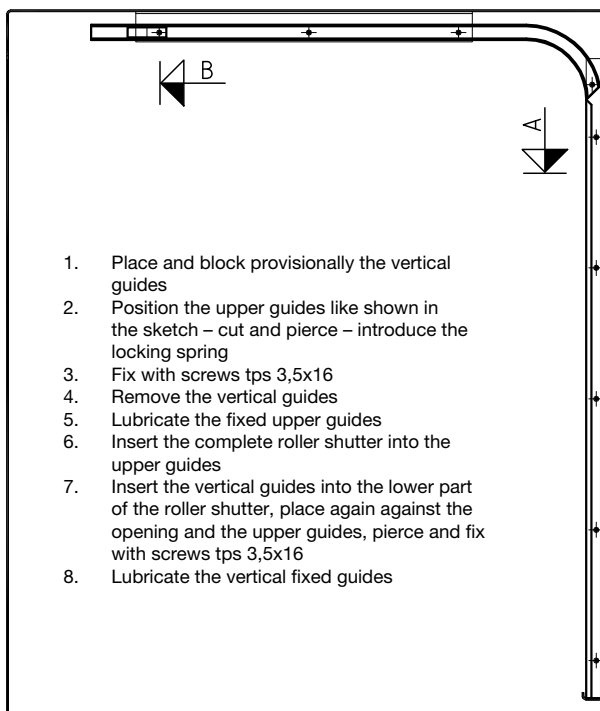
Pos.	Description	Code
1	barlock with key	70180.00
2	aglas ( block )	7006
3	shutter's grasp profile	70169.00
4	closing with key	7101
5	closing without key	7102
6	aglas ( block )	7006
7	closing with handles	70189.00
8	little rubber leaf	7007
9	middle rubber	7023
10	right sliding block	7010
11	left sliding block	7025
12	left side guide	70200.01.01
13	right side guide	70200.01.02
14	rubber seal	7026
15	little shutter's profile	7024
16	lateral double plastic curve	70200.02.00
17	fixing screws	70134.11
18	rear guide	70200.01.03



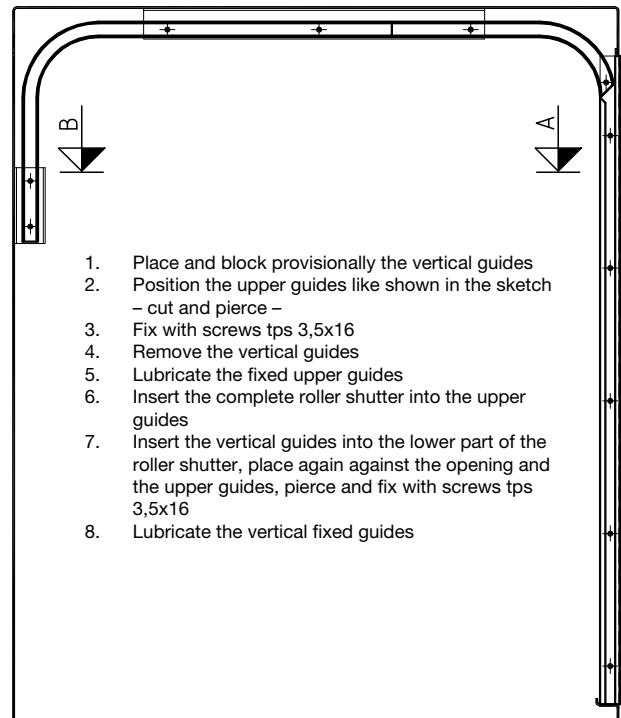
- Place and fix the lateral plastic curves A and B with TC 4,8 x 16 screws
- Place and block provisionally the vertical guides
- Position the upper guides like shown in the sketch – cut and pierce
- Fix with screws tps 3,5x16
- Remove the vertical guides
- Lubricate the vertical fixed guides
- Insert the complete roller shutter into the upper guides
- Fix the guttering profile (if requested/supplied)
- Insert the vertical guides into the lower part of the roller shutter, place again against the opening and the upper guides, pierce and fix with screws tps 3,5x16
- Lubricate the vertical fixed guides



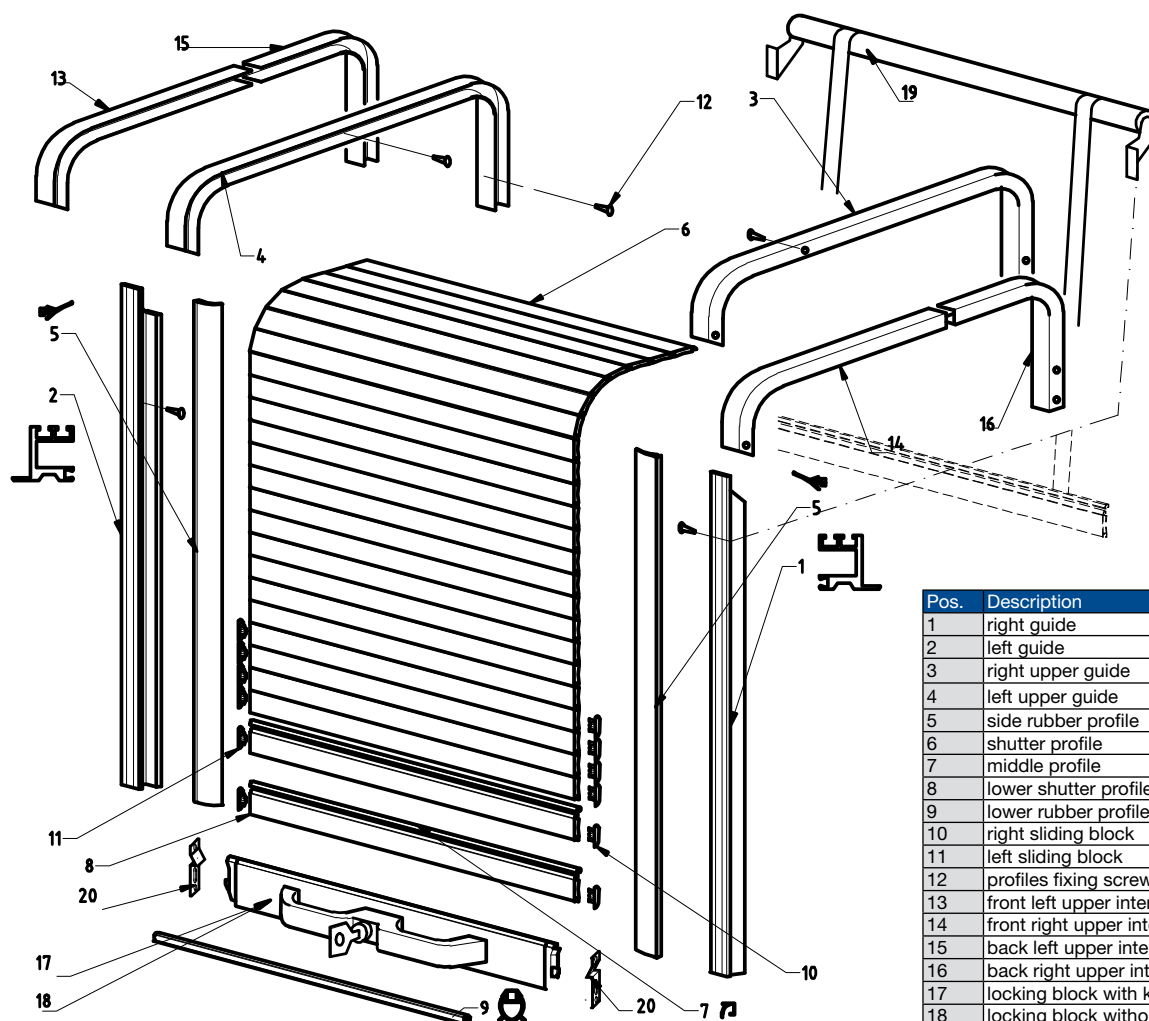
Pos.	Description	Code
1	right guide	70143.01
2	left guide	70143.02
3	right upper guide	70143.03
4	left upper guide	70143.04
5	side rubber profile	7026
6	shutter profile	7024
7	middle profile	7023
8	end profile	70143.08
9	lower rubber profile	7007
10	right sliding block	7010
11	left sliding block	7025
12	profiles fixing screws	70134.11
13	front left upper profile	70143.14
14	front right upper profile	70134.15
15	back left upper profile	70134.16
16	back right upper profile	70134.17
17	handles	70143.12
18	handle fixing screws	70143.12
19	roll group with supports	70167.01



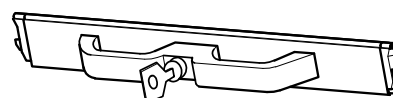
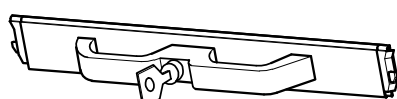
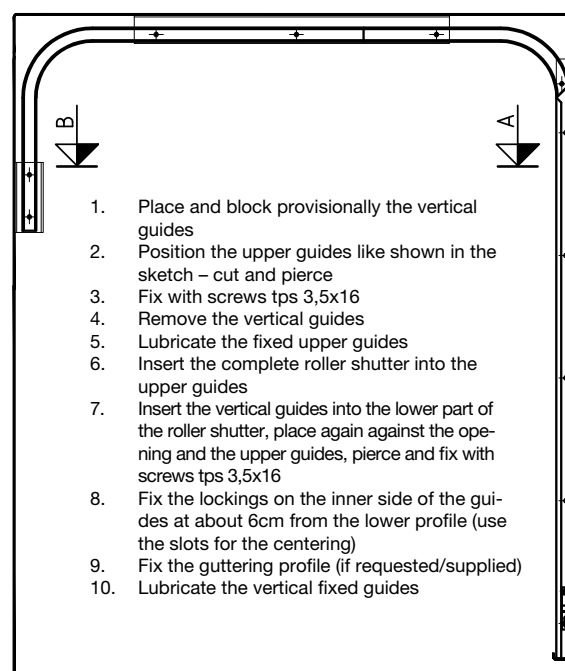
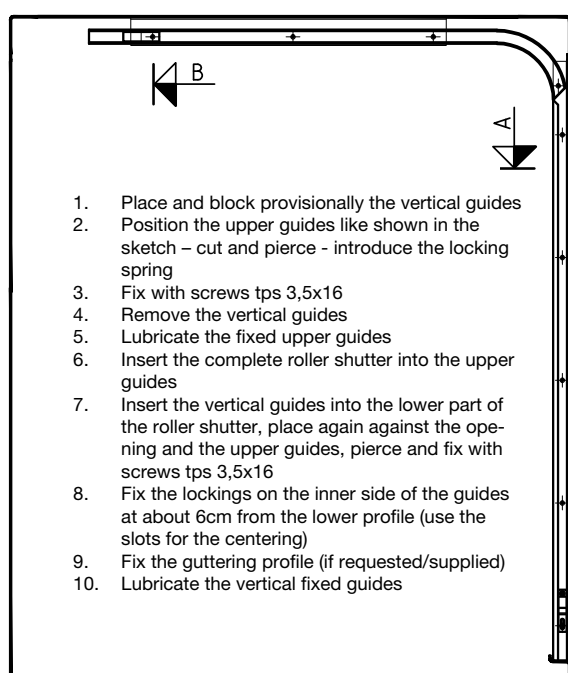
1. Place and block provisionally the vertical guides
2. Position the upper guides like shown in the sketch – cut and pierce – introduce the locking spring
3. Fix with screws tps 3,5x16
4. Remove the vertical guides
5. Lubricate the fixed upper guides
6. Insert the complete roller shutter into the upper guides
7. Insert the vertical guides into the lower part of the roller shutter, place again against the opening and the upper guides, pierce and fix with screws tps 3,5x16
8. Lubricate the vertical fixed guides



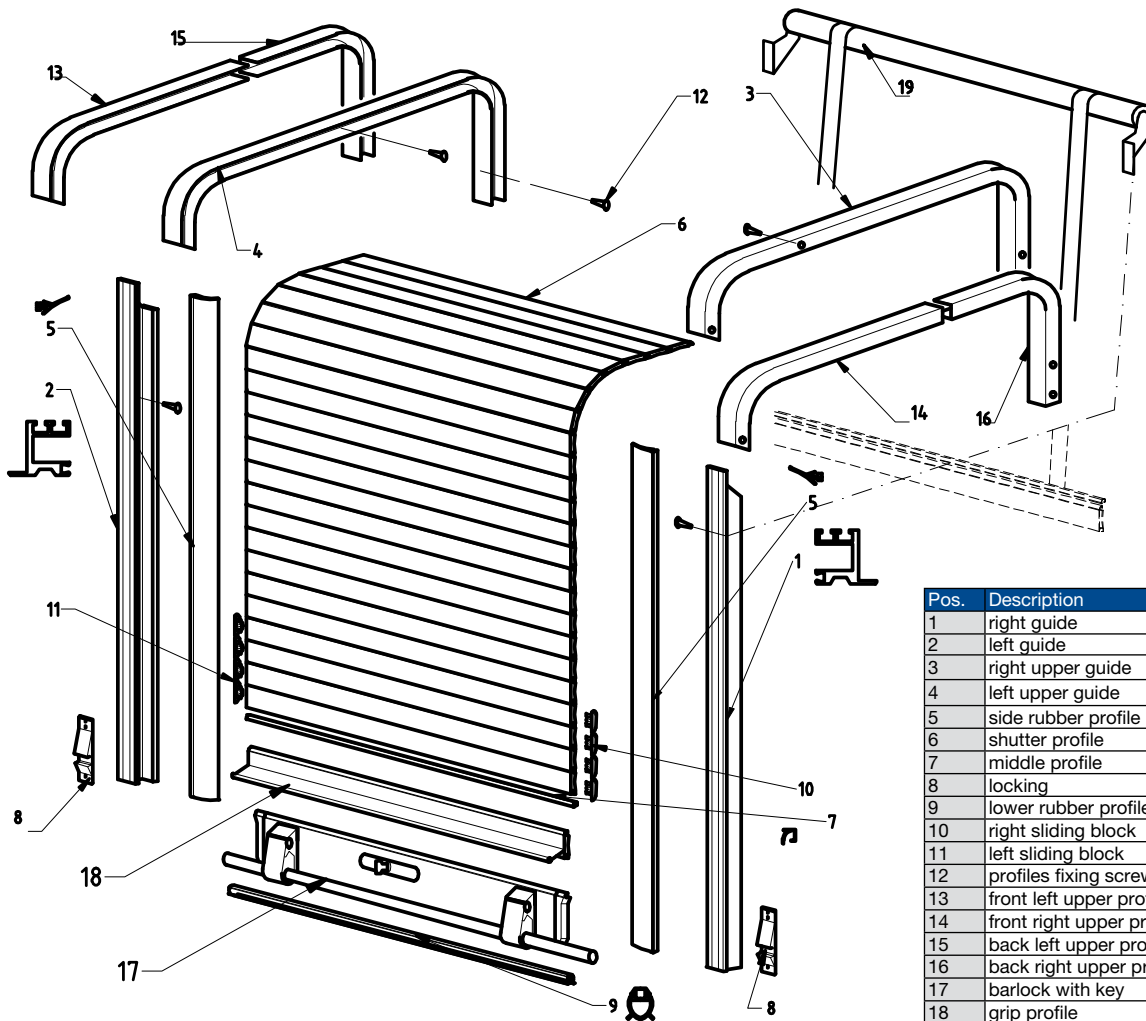
1. Place and block provisionally the vertical guides
2. Position the upper guides like shown in the sketch – cut and pierce –
3. Fix with screws tps 3,5x16
4. Remove the vertical guides
5. Lubricate the fixed upper guides
6. Insert the complete roller shutter into the upper guides
7. Insert the vertical guides into the lower part of the roller shutter, place again against the opening and the upper guides, pierce and fix with screws tps 3,5x16
8. Lubricate the vertical fixed guides



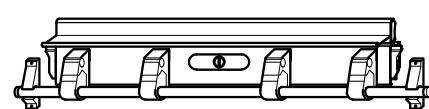
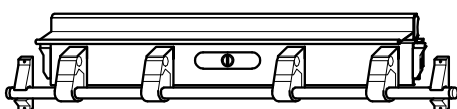
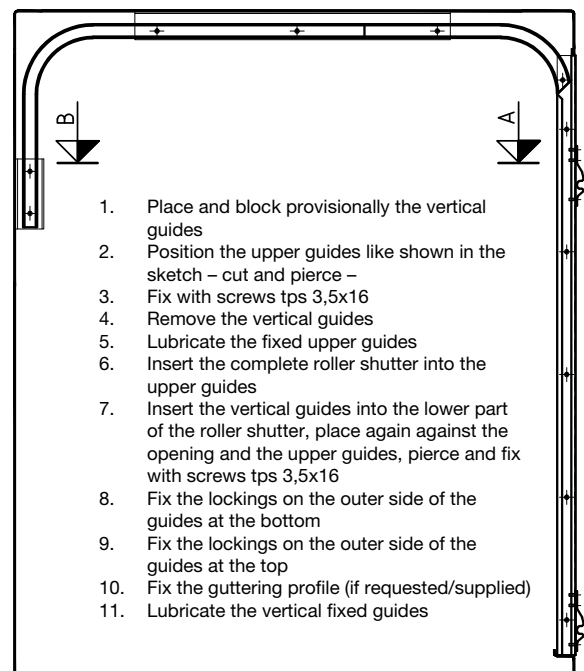
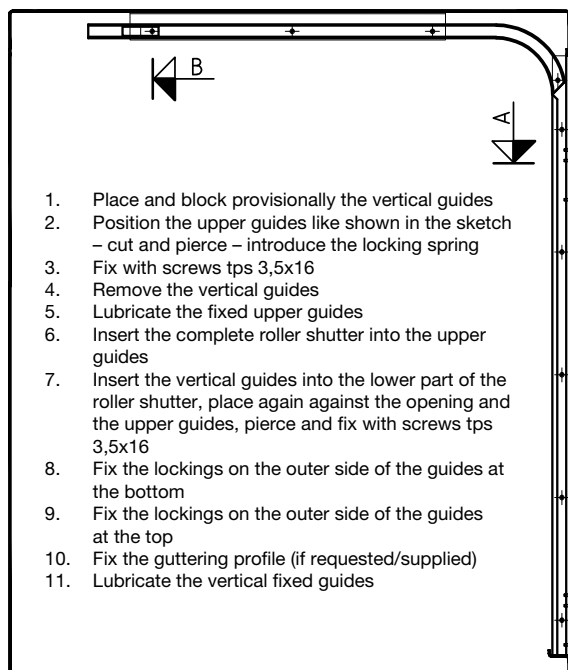
Pos.	Description	Code
1	right guide	70143.01
2	left guide	70143.02
3	right upper guide	70143.03
4	left upper guide	70143.04
5	side rubber profile	7026
6	shutter profile	7024
7	middle profile	7023
8	lower shutter profile	70143.08
9	lower rubber profile	7007
10	right sliding block	7010
11	left sliding block	7025
12	profiles fixing screws	70134.11
13	front left upper internal profile	70143.14
14	front right upper internal profile	70134.15
15	back left upper internal profile	70134.16
16	back right upper internal profile	70134.17
17	locking block with key	7101
18	locking block without key	7102
19	roll group with supports	70167.01
20	locking	7006

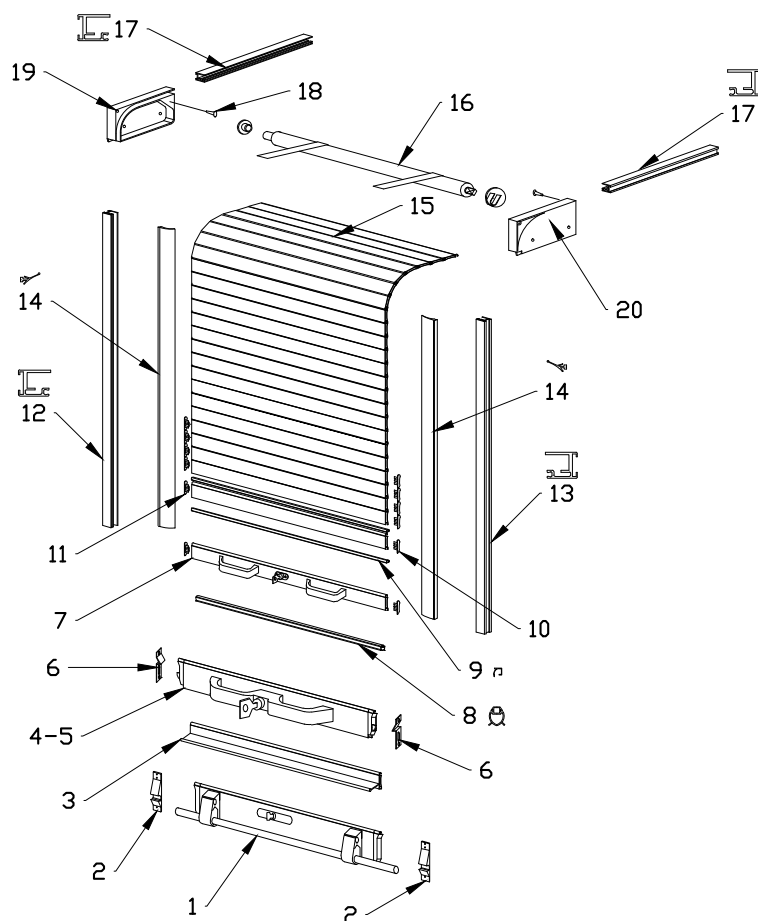






Pos.	Description	Code
1	right guide	70143.01
2	left guide	70143.02
3	right upper guide	70143.03
4	left upper guide	70143.04
5	side rubber profile	7026
6	shutter profile	7024
7	middle profile	7023
8	locking	7006
9	lower rubber profile	7007
10	right sliding block	7010
11	left sliding block	7025
12	profiles fixing screws	70134.11
13	front left upper profile	70143.14
14	front right upper profile	70134.15
15	back left upper profile	70134.16
16	back right upper profile	70134.17
17	barlock with key	70180.00
18	grip profile	70169.00
19	roll group with supports	70167.01

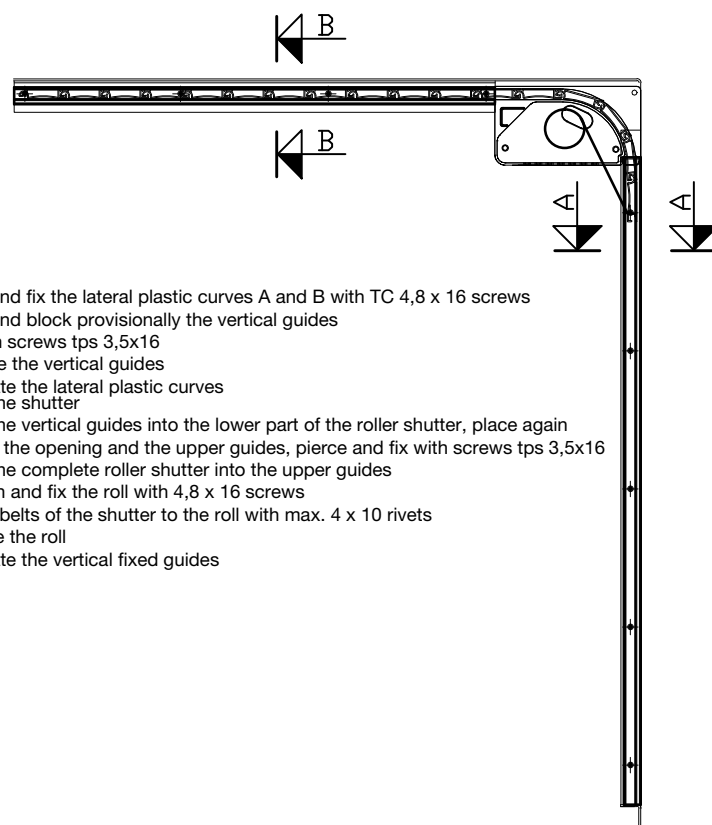




## ECO SIMPLY 1

### EXPLODED VIEW

Pos.	Description	Code
1	barlock with key	70180.00
2	aglas ( block )	7006
3	shutter's grasp profile	70169.00
4	closing with key	7101
5	closing without key	7102
6	aglas ( block )	7006
7	closing with handles	70189.00
8	little rubber leaf	7007
9	middle rubber	7023
10	right sliding block	7010
11	left sliding block	7025
12	left side guide	70200.01.01
13	right side guide	70200.01.02
14	rubber seal	7026
15	little shutter's profile	7024
16	group roll with the support	70167.01
17	upper guide	70200.01.04
18	fixing screws	70134.11
19	lateral plastic curve A	70200.02.01
20	lateral plastic curve B	70200.02.02

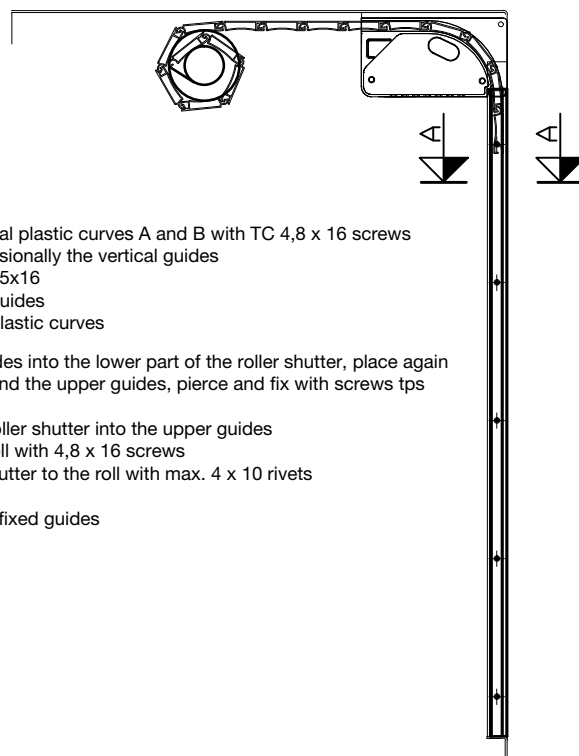
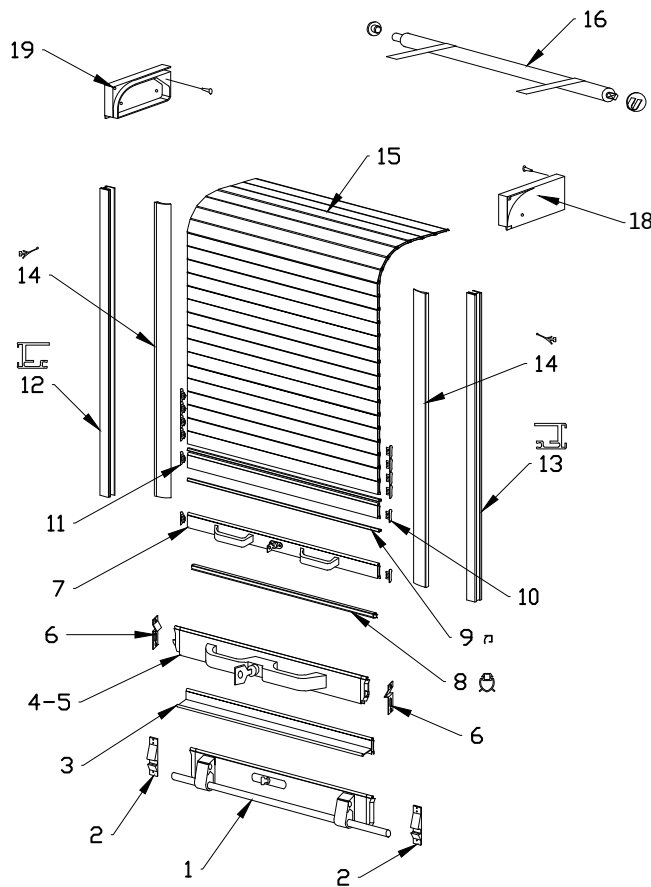


1. Place and fix the lateral plastic curves A and B with TC 4,8 x 16 screws
2. Place and block provisionally the vertical guides
3. Fix with screws tps 3,5x16
4. Remove the vertical guides
5. Lubricate the lateral plastic curves
6. Insert the shutter
7. Insert the vertical guides into the lower part of the roller shutter, place again against the opening and the upper guides, pierce and fix with screws tps 3,5x16
8. Insert the complete roller shutter into the upper guides
9. Position and fix the roll with 4,8 x 16 screws
10. Fix the belts of the shutter to the roll with max. 4 x 10 rivets
11. Release the roll
12. Lubricate the vertical fixed guides

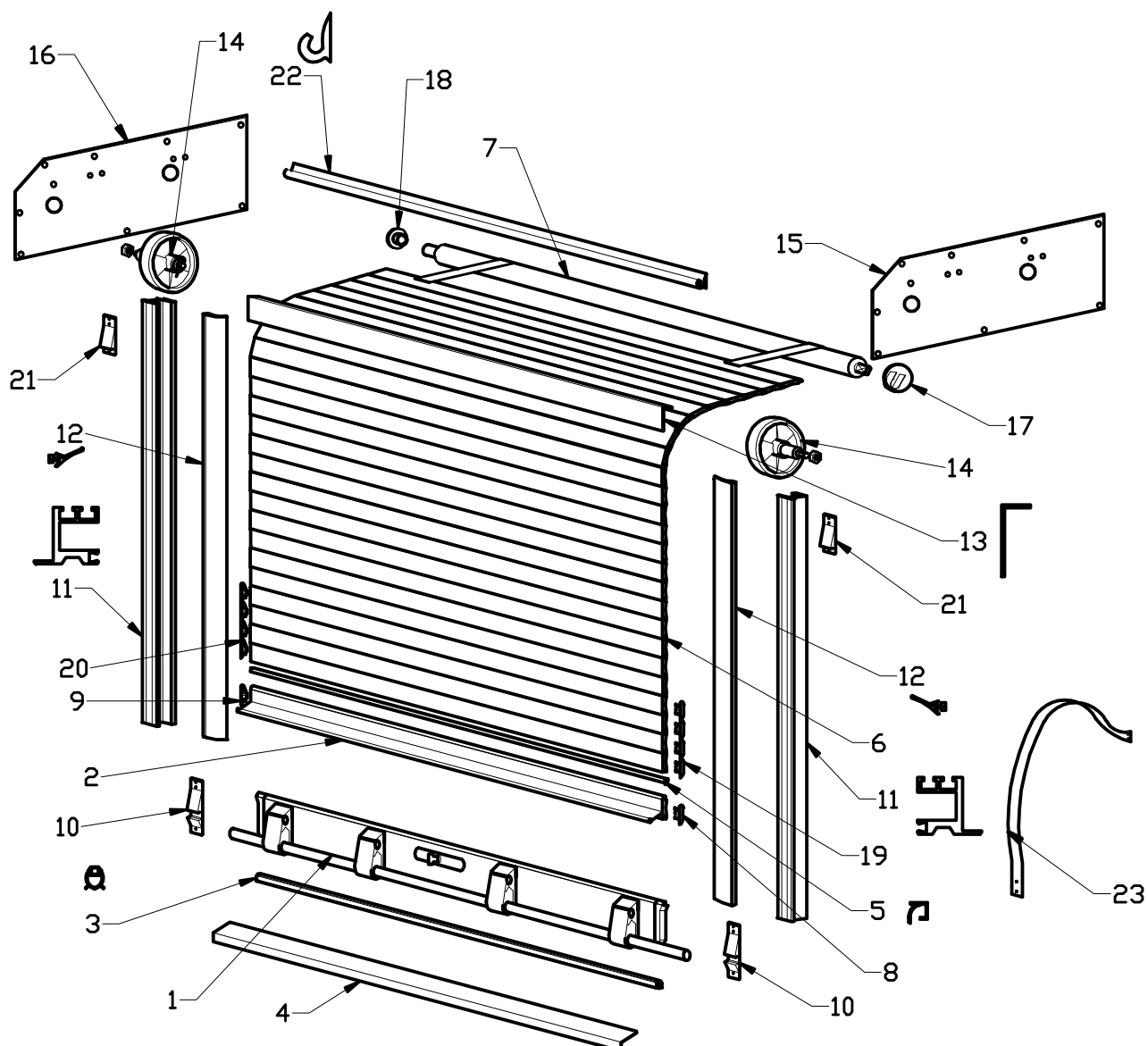
## ECO SIMPLY 2

### EXPLODED VIEW

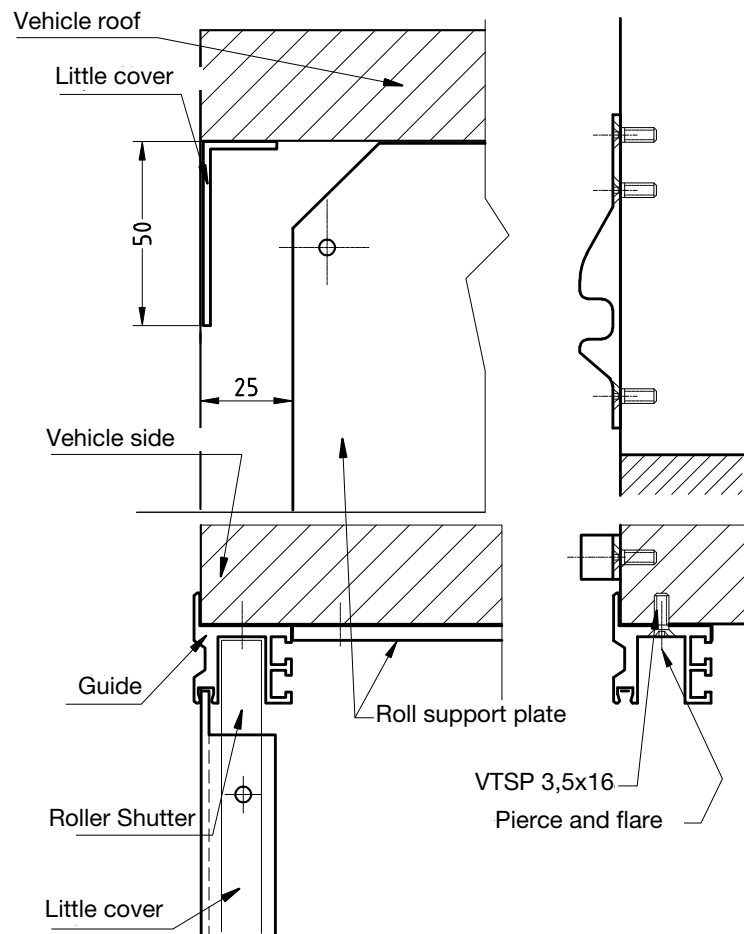
Pos.	Description	Code
1	barlock with key	70180.00
2	aglas ( block )	7006
3	shutter's grasp profile	70169.00
4	closing with key	7101
5	closing without key	7102
6	aglas ( block )	7006
7	closing with handles	70189.00
8	little rubber leaf	7007
9	middle rubber	7023
10	right sliding block	7010
11	left sliding block	7025
12	left side guide	70200.01.01
13	right side guide	70200.01.02
14	rubber seal	7026
15	little shutter's profile	7024
16	group roll with support	70167.01
17	fixing screws	70134.11
18	lateral plastic curve A	70200.02.01
19	lateral plastic curve B	70200.02.02



1. Place and fix the lateral plastic curves A and B with TC 4,8 x 16 screws
2. Place and block provisionally the vertical guides
3. Fix with screws tps 3,5x16
4. Remove the vertical guides
5. Lubricate the lateral plastic curves
6. Insert the shutter
7. Insert the vertical guides into the lower part of the roller shutter, place again against the opening and the upper guides, pierce and fix with screws tps 3,5x16
8. Insert the complete roller shutter into the upper guides
9. Position and fix the roll with 4,8 x 16 screws
10. Fix the belts of the shutter to the roll with max. 4 x 10 rivets
11. Release the roll
12. Lubricate the vertical fixed guides



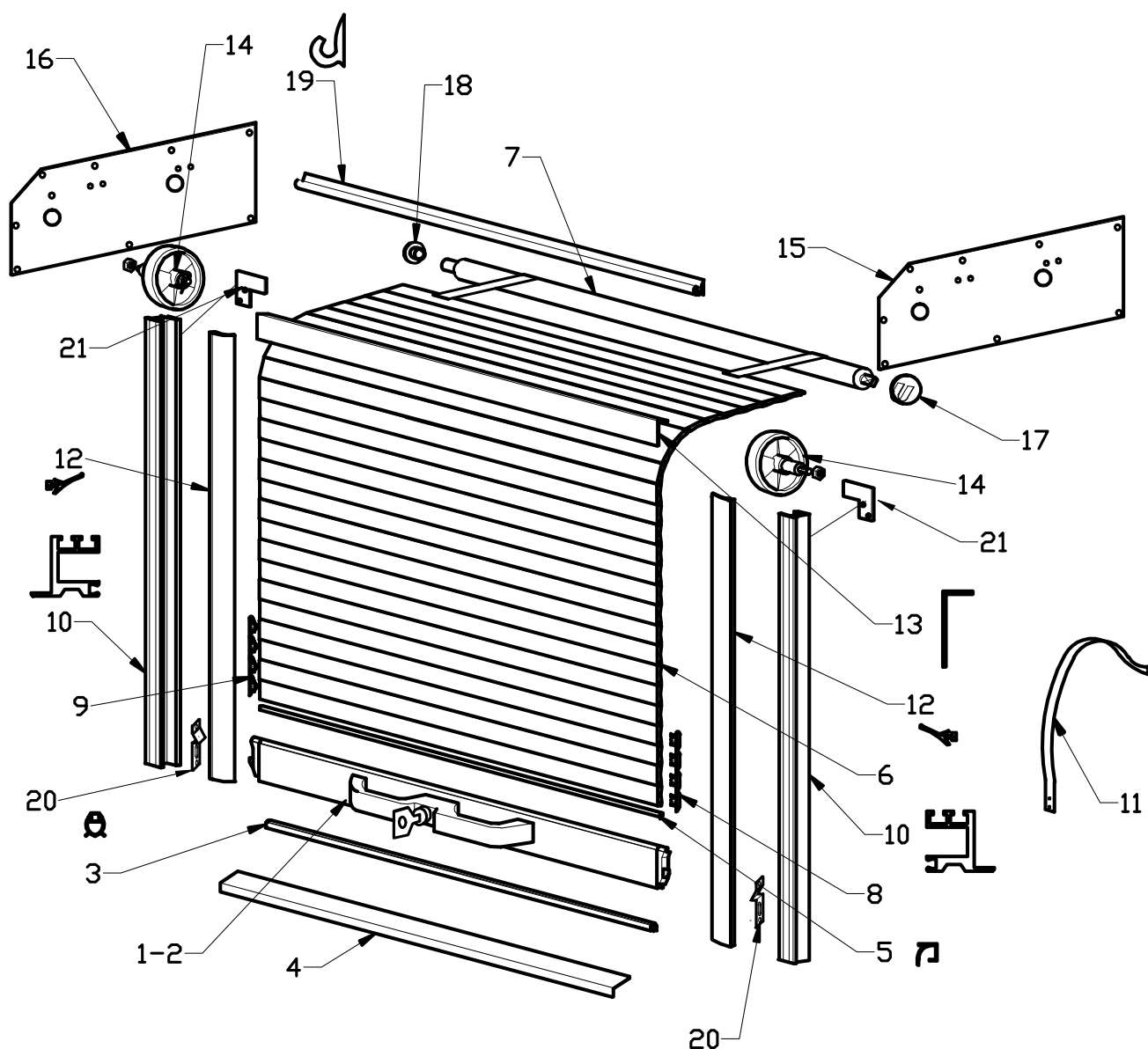
Pos.	Description	Code
1	barlock with key	70180.00
2	grip profile	70169.00
3	leaf rubber	70007.00
4	lower profile	70014.00
5	middle rubber	70023.00
6	shutter profile	70168.00
7	roll group	71003.00
8	right sliding plate h38	70010.dx
9	left sliding plate h38	70010.sx
10	lower locking	70150.03
11	lateral guide	70003.00
12	seal rubber	70026.00
13	little cover	70027.00
14	wheel group	71004.00
15	right fixing plate	70105.00
16	left fixing plate	70104.00
17	roll space	70017.00
18	pin with bearing	70018.00
19	right sliding plate h30	70177.dx
20	left sliding plate h30	70177.sx
21	upper locking	70175.00
22	gutter profile	70181.02
23	pulling belt	70181.01



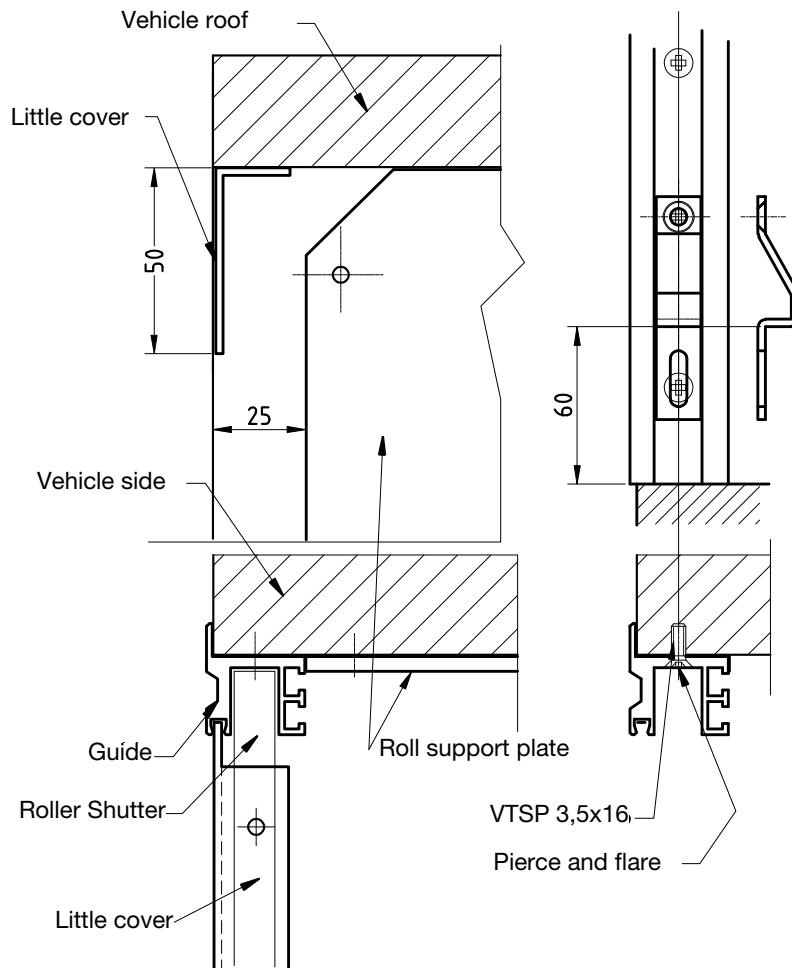
1. Mount the lower profile
2. Place the guides
3. Mount the upper cover
4. Position the plates with the wheels and the roll holders (already mounted) in reference to the guides (see plan)
5. Fit the plates
6. Insert the roll into the holders in the correct position, like shown in the plan and on the roll
7. Remove the guides
8. Insert the shutter into the opening from the front side (the shutter looks like shown in the spare parts plan)
9. Mount again the guides and fit them definitively
10. Fit the belts on the preset roll
11. Remove the roll security, turn it manually in the loading direction and release it.  
(Attention: now the shutter will wrap around the roll). In order to load it follow the load direction and number of turns indicated on the roll.
12. Fix the lockings on the outside of the guides, in the lower position
13. Fix the lockings on the outside of the guides, in the upper position
14. Fit the gutter profile (if requested/supplied)
15. Lubricate the sliding guides

Please note: The supplied cover can be replaced by a built-in frame.



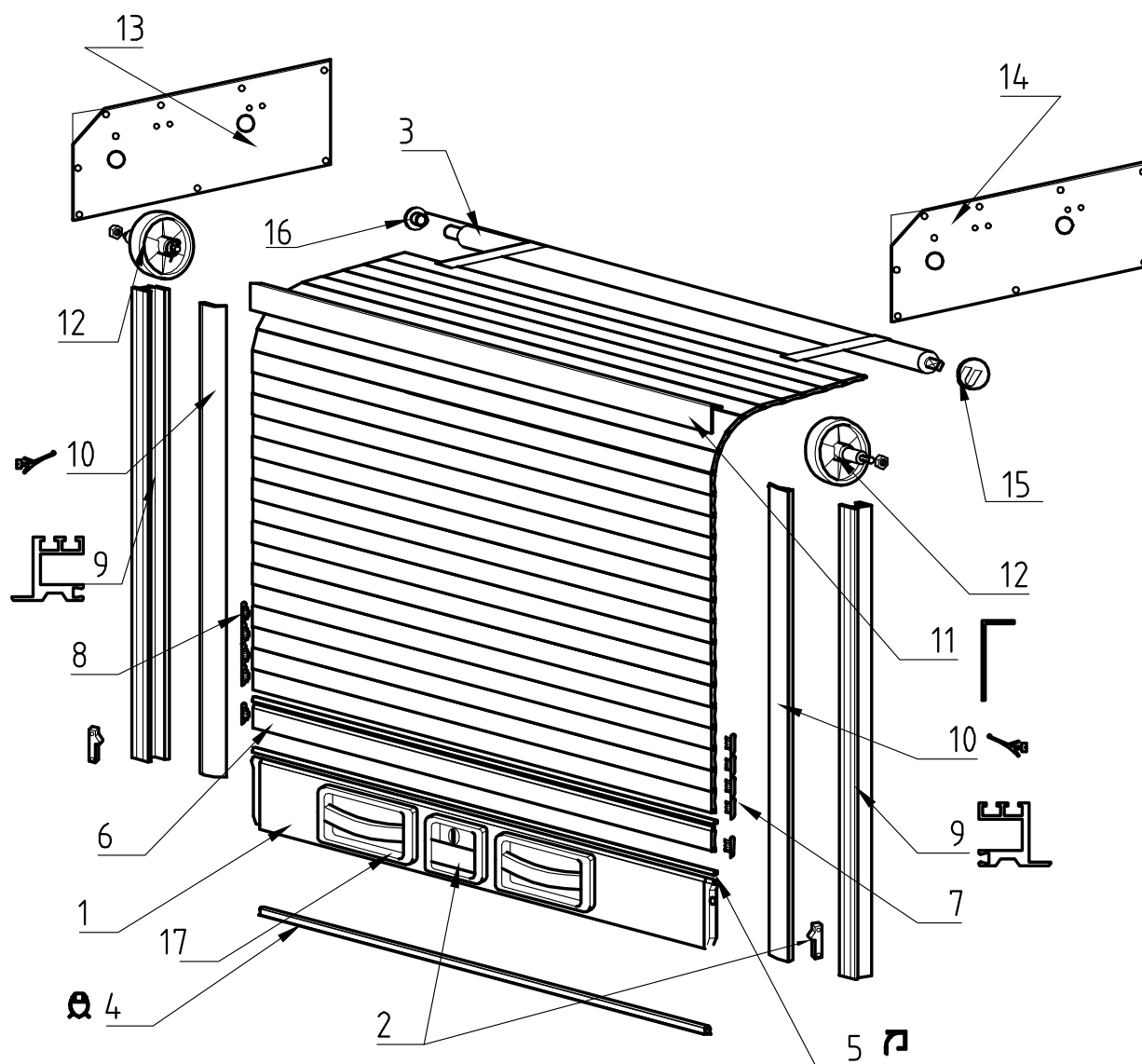


Pos.	Description	Code
1	closing group with key	71001.00
2	closing group without key	71002.00
3	lower rubber	70007.00
4	lower profile	70014.00
5	middle rubber	70023.00
6	shutter profile	70024.00
7	roll group	71003.00
8	right sliding plate h38	70010.dx
9	left sliding plate h38	70010.sx
10	lateral guide	70003.00
11	pulling belt	70181.01
12	seal rubber	70026.00
13	little cover	70027.00
14	wheel group	71004.00
15	right fixing plate	70104.00
16	left fixing plate	70105.00
17	roll space	70017.00
18	pin with bearing	70018.00
19	gutter profile	70181.02
20	locking	70006.01
21	upper block	70181.03

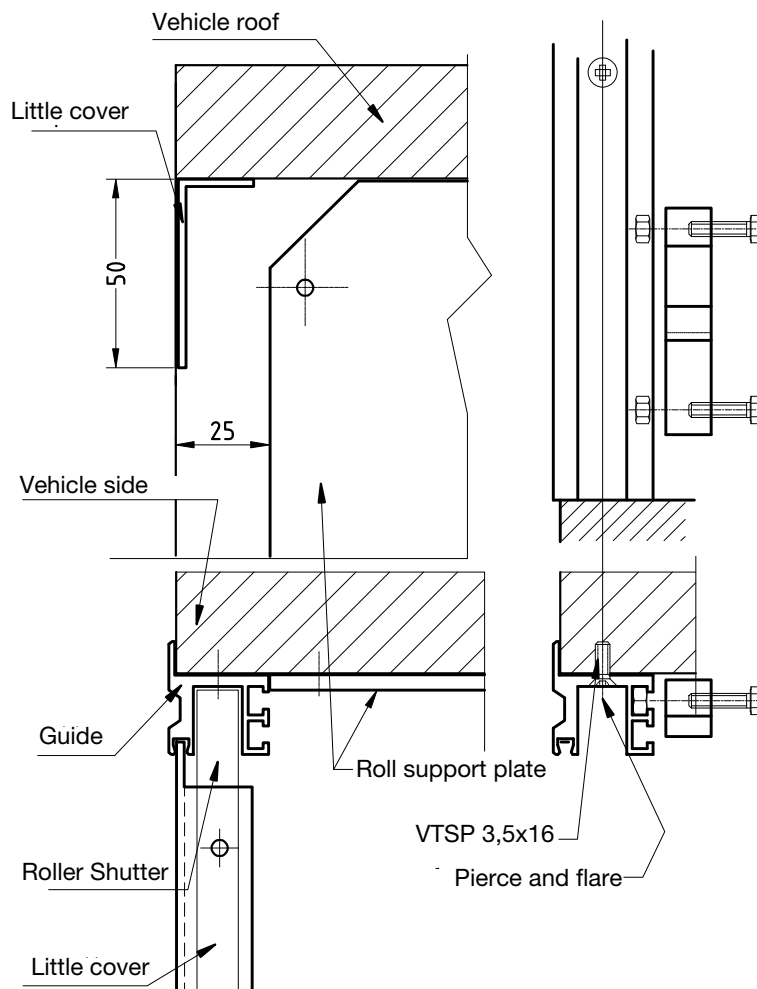


1. Mount the lower profile
2. Place the guides
3. Mount the upper cover
4. Position the plates with the wheels and the roll holders (already mounted) in reference to the guides (see plan)
5. Fix the plates
6. Insert the roll into the holders in the correct position, like shown in the plan and on the roll
7. Remove the guides
8. Insert the shutter into the opening from the front side (the shutter looks like shown in the spare parts plan)
9. Mount again the guides and fit them definitively
10. Fit the belts on the preset roll
11. Remove the roll security, turn it manually in the loading direction and release it. (Attention: now the shutter will wrap around the roll). In order to load it follow the load direction and number of turns indicated on the roll.
12. Fix the lockings on the inner side of the guides at about 6 cm from the lower profile (use the slots for the centering)
13. Fit the gutter profile (if requested/supplied)
14. Lubricate the sliding guides

Please note: The supplied cover can be replaced by a built-in frame.

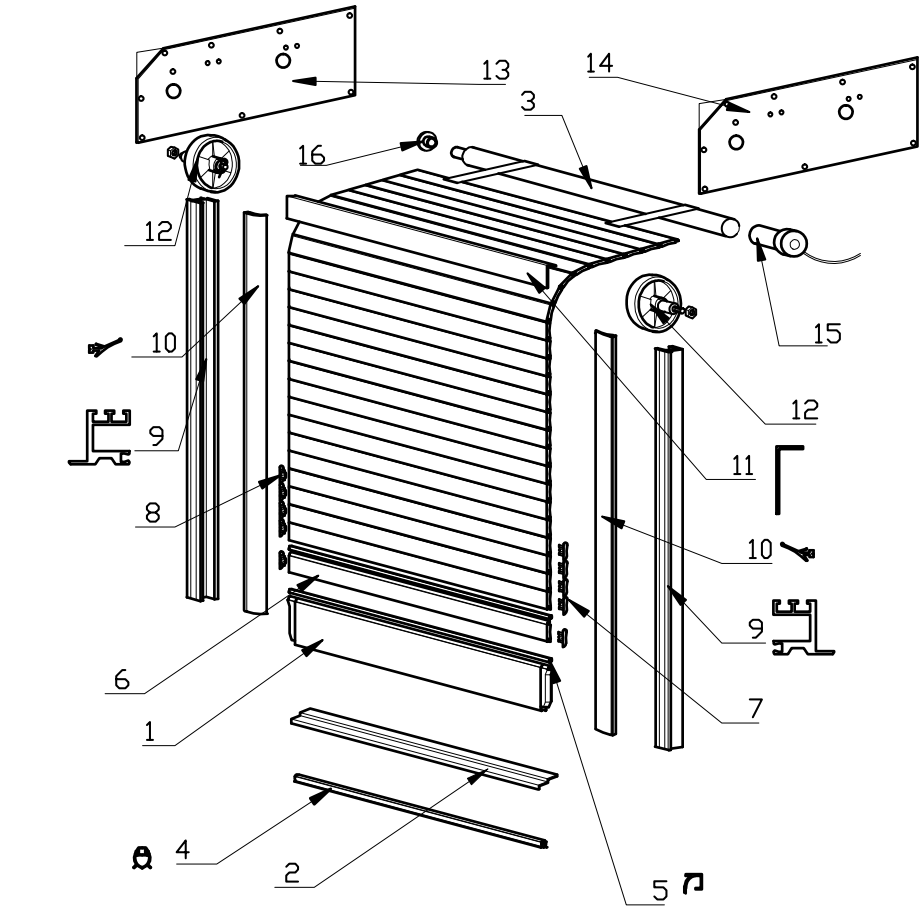


Pos.	Description	Code
1	closing group	70139.01
2	stainless steel locking + 2 locks	70380.34
3	rolls group with supports	70139.03
4	lower rubber	7007
5	middle rubber	7023
6	shutter profile	7024
7	right sliding plate	7010
8	left sliding plate	7025
9	lateral guide	7003
10	sealing rubber	7026
11	cover	7027
12	wheel group	7104
13	left fixing plate	7028
14	right fixing plate	7029
15	roll seat	70017
16	pin with bearing	70018
17	handle	70139.04

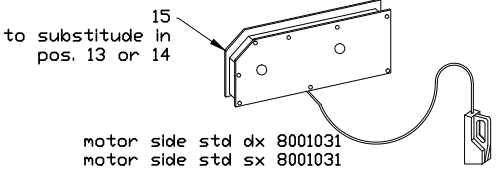
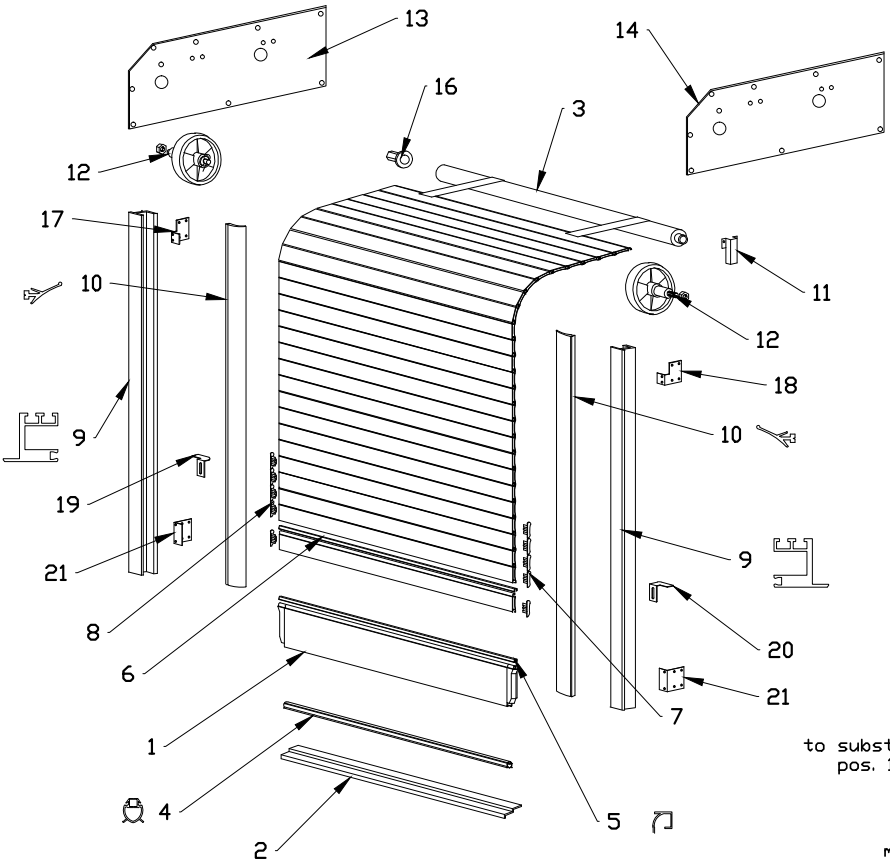


1. Mount the lower profile
2. Place the guides
3. Mount the upper cover
4. Position the plates with the wheels and the roll holders (already mounted) in reference to the guides (see plan)
5. Fit the plates
6. Insert the roll into the holders in the correct position, like shown in the plan
7. Remove the guides
8. Insert the shutter into the opening from the front side (the shutter looks like shown in the spare parts plan)
9. Mount again the guides and fit them definitively
10. Fit the belts on the preset roll
11. Adjust the height of the lockings along the guides for a correct closing (use bolts M4)
12. Fit the gutter profile (if requested/supplied)

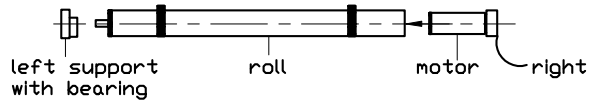
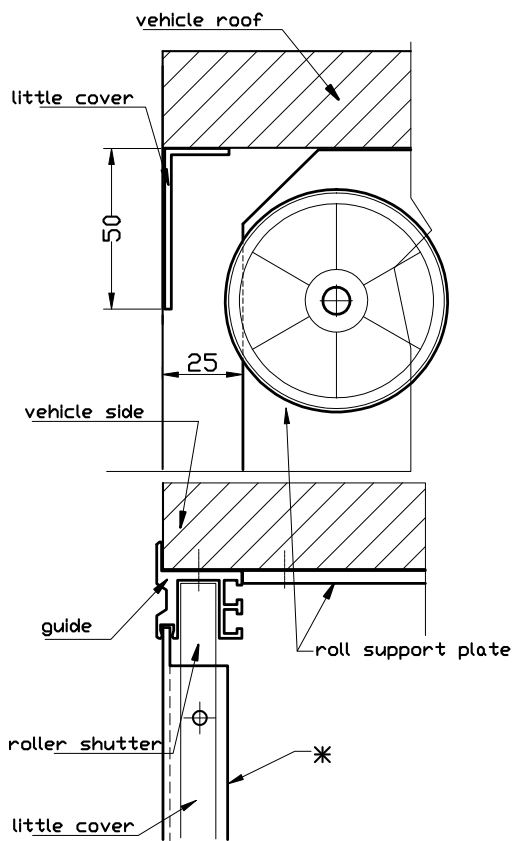
Please note: The supplied cover can be replaced by a built-in frame.



Pos.	Description	Code
1	closing end (that can be loaded)	70140.01
2	lower profile	70140.00
3	rolls group with supports	70140.03
4	lower rubber profile	7007
5	middle rubber	7023
6	shutter profile	7024
7	right sliding plate	7010
8	left sliding plate	7025
9	side guide	7003
10	sealing rubber	7026
11	cover	7027
12	wheel group	7104
13	left fixing plate	7028
14	right fixing plate	7029
15	motor	70183
16	roll support with bearing	70018

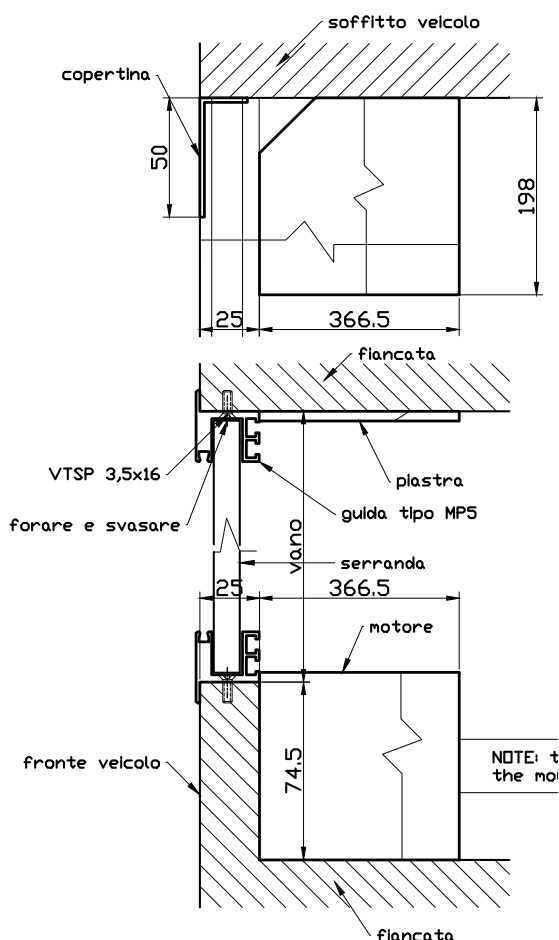






1. Place the guides
2. Fix the profile of the little cover
3. Position the plates with the wheels and the roll holders (already mounted) in reference to the guides (see plan)
4. Fix the plates
5. Cut the roll accordingly
6. Insert the roll into the holders in the correct position, like shown in the plan and on the roll
7. Remove the guides
8. Insert the shutter into the opening from the front side (the shutter looks like shown in the spare parts plan)
9. Mount again the guides and fit them definitively
10. Fit the belts on the preset roll
11. Regulate the opening end-switch
12. Regulate the closing end-switch
13. Lubricate the sliding guides

Please note: The supplied cover can be replaced by a built-in frame.



1. Mount the lower profile (shorten or shape if necessary)
2. Mount the end-switches plates onto the upper and lower guide (right guide for the RH motors and left guide for the LH motors)
3. Locate the guides (shorten them if necessary)
4. Mount pin and wheel onto the roll holding plate /choose the more suitable position among the prearranged holes onto plate)
5. Mount the plate with pin and wheel, with reference to the guide (see plan)
6. Mount pin and wheel onto the motor plate (choose the more suitable position among the prearranged holes onto the plate)
7. Mount the emergency handle for motor release (complete with cable and sheath) in one of the 3 positions set on the motor after adapting the cable length, which depends on the position chosen for the emergency handle
8. Locate and fix the motor with pin and wheel mounted, taking the guides as a reference (see plan)
9. Shorten the roll and put the cap with hexagonal pin
10. Secure the support for the square pin of the roll to the plate in line with hexagonal axis on the motor
11. Locate the winding toll in the correct position
12. Remove the guides
13. Locate the shutter into the vehicle opening from the front (the shutter will look like in the spare parts table)
14. Fix the guides permanently
15. Fix the belts onto the pre-loaded winding roll
16. Perform the motor release operation by using the related emergency handle
17. See the instructions on the winding roll. PAY ATTENTION the winding roll comes pre-loaded. Remove the safety pin from the roll, rotate it manually towards the loading direction and release it. Now the shutter winds onto the roll
18. Mount the gutter profile
19. Duly lubricate the sliding guides
20. Locate the squashing end-switch plate onto the shutter closing profile – LH or RH side (depending on the position of the motor)

For the electrical connections please follow the electrical table supplied

**WARNING: PRE-LOADED WRAPPED ROLL**

For mounting the roller correctly, connect it in the proper support, fitting on the opposite side the cap with hexagonal pin coupling to the engine and in the correct position as indicated on the label.

THE BLACK STRIPE ON THE PAPER must be positioned on the wrapping roll:

- RH head side of roll in case of LEFT motorization
- LH head side of roll in case of RIGHT motorization

**POINT OUT THE POSITION OF SAFETY PLUG**

Set the roller with the safety pin (wrapped by protective paper) so it comes out under the roll, releasing the roll from the paper. The pin comes out from the roll itself.

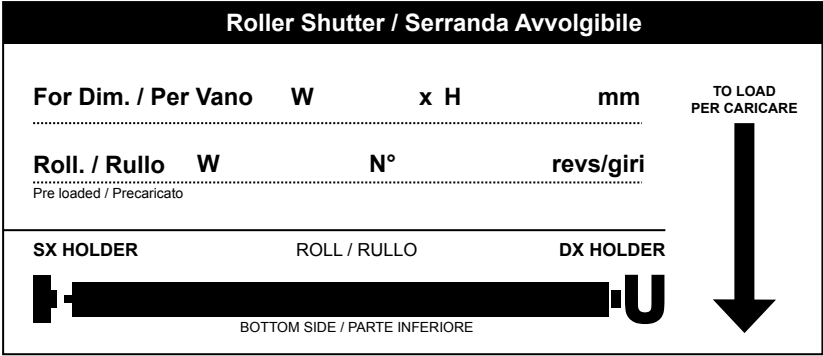
Loosen the engine with proper handle

Manually rotate the roller in the charging direction and release it immediately.

The roller loader will wrap the straps recalling the roller shutter

**DO NOT CLEAR THE ROLL FROM THE SAFETY PIN BEFORE HAVING FULLY FITTED THE ROLLER SHUTTER AND HAVING RELEASED THE ENGINE.**

In case of download of winding roll before have completed the mounting process, recharge following the direction of charging and the strokes number always indicated on the roller itself; lock reinserting the safety pin. Repeat again the previous operations.



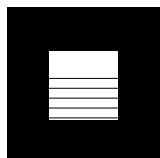
# READY MP4 & READY MP5



## MOUNTING INSTRUCTIONS SYSTEM “READY” (MP4 – MP5)

Refer to the video

1. Check that the measures inside the compartment are correct
2. Fix the lower profile (if supplied) with bi-adhesive already provided
3. Fix the upper cover profile (if supplied) with bi-adhesive already provided
4. Mount the reinforcing support brackets in the seats positioned on the rear guide
5. Join the guides on the plates in their seats inserting in the proper seats
6. Adjust and secure the reinforcing support brackets to the plates with the TPS screws
7. Slip on the whole kit with mounted guides holding it by the guides into the compartment of the roller shutter (operation to be done in 2 or more persons depending on the size of the roller shutter)
8. Position, drill and fasten the guides to the compartment
9. Check and adjust the exact height of the plate (front-rear)
10. Fix the plate and lock the reinforcing support brackets
11. If necessary, adjust the height of the wheels across the adjustable seat support
12. Drill and fix the locking
13. Grease the sliding lateral guides



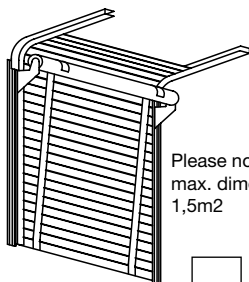
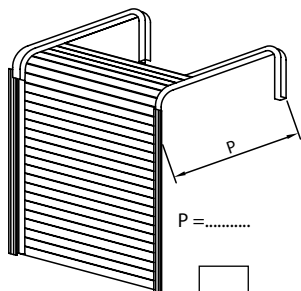
**SRS**  
ROLLER SHUTTERS

SRS Roller Shutters s.r.l.  
Via Enrico Fermi, 56  
25064 Gussago (BS)  
Tel. +39 030 3733916  
Fax +39 030 3733762  
info@srs-shutters.com  
www.srs-shutters.com

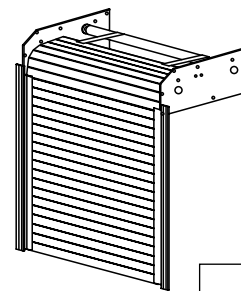
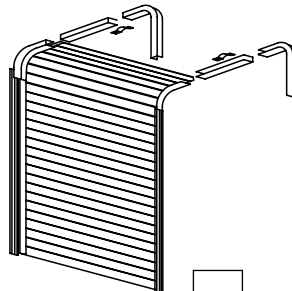
## REQUEST FOR ROLLER SHUTTERS FOR SPECIAL VEHICLES

Customer:			
Date:			
Delivery date:			
Note:			
Offer:		Order:	

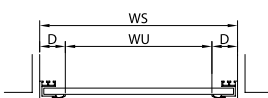
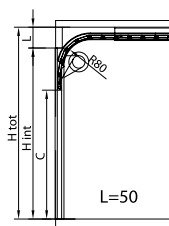
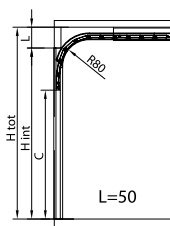
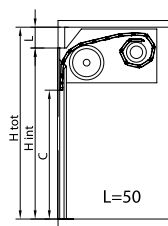
### SLIDING SYSTEM



Please note:  
max. dimensions  
1,5m2

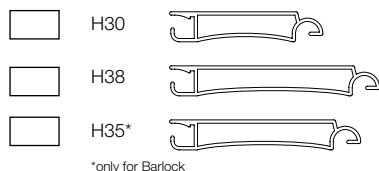


### SHUTTER DIMENSIONS



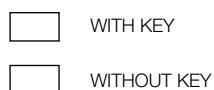
Quantity	
H Tot. height	
H Internal height	
C Passing height	
WS Total Width	

### PROFILE MODEL

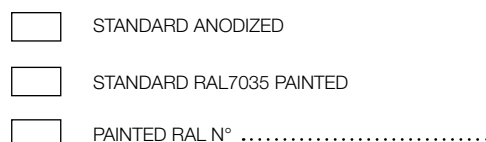


\*only for Barlock

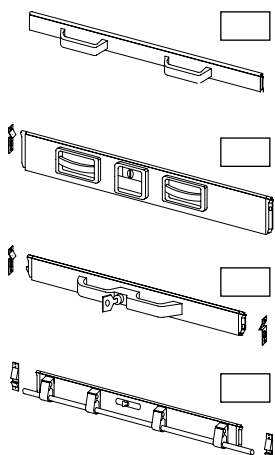
### CLOSING



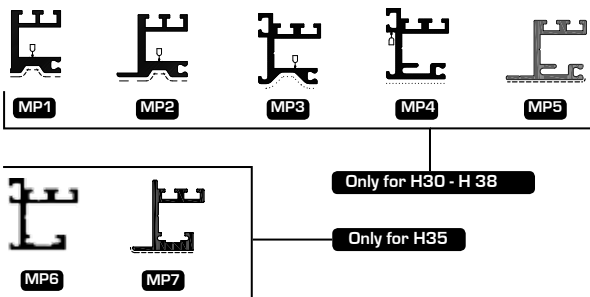
### FINISHING



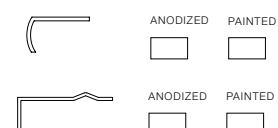
### CLOSING END MODEL



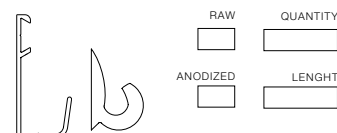
### SIDE PROFILE



### LOWER PROFILE



### GUTTER PROFILE



### PROFILE FOR BARLOCK



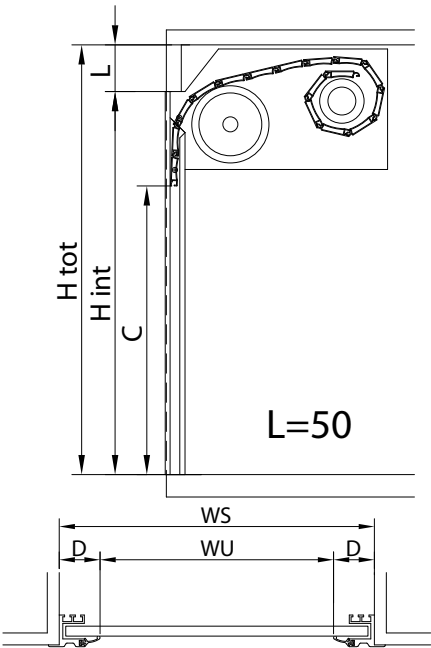
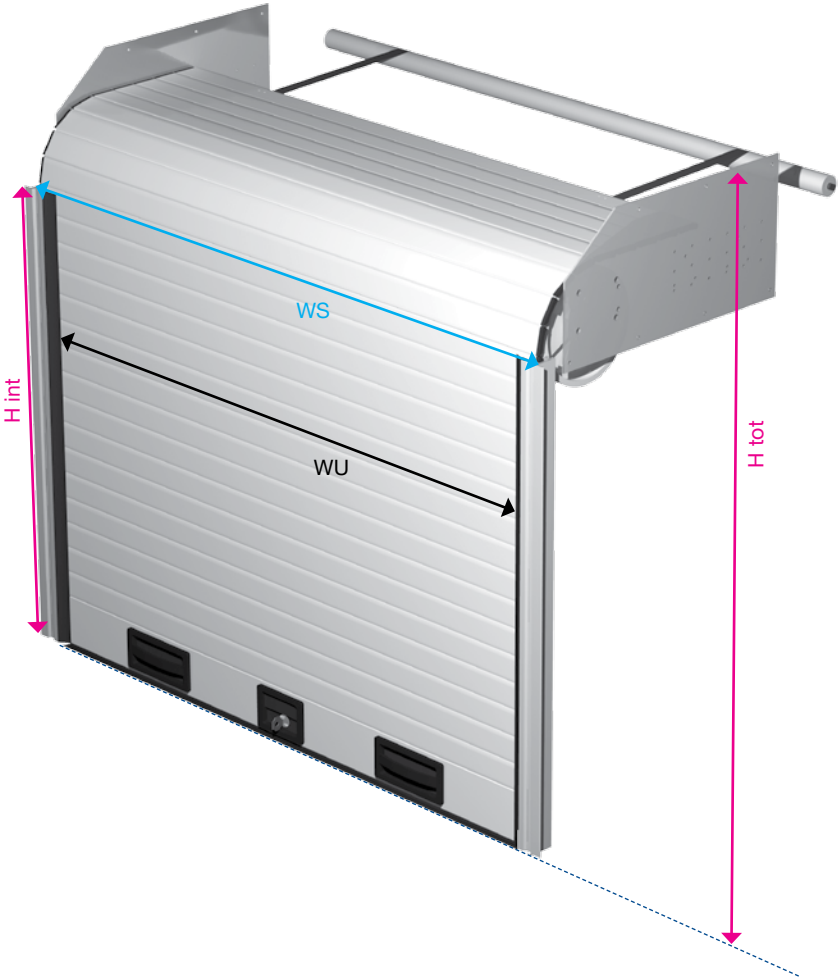
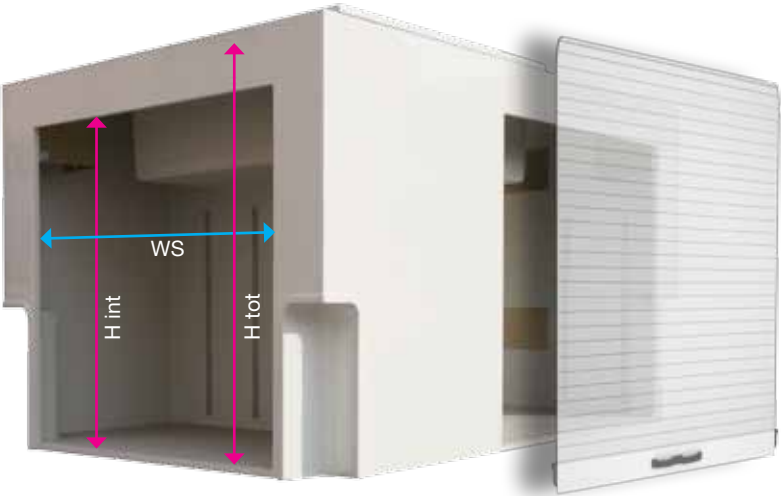
note:

THIS ORDER FORM CAN BE DOWNLOADED  
IN PDF FILE FORMAT DIRECTLY FROM  
[HTTP://WWW.SRS-SHUTTERS.COM/FORM](http://www.srs-shutters.com/form)

# MEASURING



MEASUREMENTS	
H tot	Total height
H int	Internal height
L	Sliding room
C	Light height
WU	Light width
WS	Total width
D	Guide and gasket edge





# Emergency Vehicle Technologies Australia



41 Walgood Grove (PO Box 191), Macedon, VIC, 3440  
Ph / Fax +61 3 5426 4301  
[www.emergencyvta.com.au](http://www.emergencyvta.com.au) [info@emergencyvta.com.au](mailto:info@emergencyvta.com.au)



**SRS**  
ROLLER SHUTTERS

SRS Roller Shutters s.r.l.  
Via Enrico Fermi, 56  
25064 Gussago (BS)  
Tel. +39 030 3733916  
Fax +39 030 3733762  
[info@srs-shutters.com](mailto:info@srs-shutters.com)  
[www.srs-shutters.com](http://www.srs-shutters.com)

FIRECO SRL  
Via E. Fermi, 56  
25064 GUSSAGO (BS)  
IT - ITALIA  
Tel.: +39 030 3733916  
Fax : +39 030 3733762  
[www.fireco.eu](http://www.fireco.eu)  
[info@fireco.it](mailto:info@fireco.it)

HISPAMAST, S.L.  
C/Estaño, 30  
28510 Campo Real  
ES - ESPAÑA  
Tel.: +34 918 733733  
Fax: +34 918 765141  
[www.hispamast.com](http://www.hispamast.com)  
[info@hispamast.com](mailto:info@hispamast.com)

FIRECO SYSTEMS N.V.  
Diestersteenweg 142  
3510 KERMIT  
BE - BELGIUM  
Tel.: +32 11 851602  
Fax : +32 11 851604  
[www.fireco.be](http://www.fireco.be)  
[info@fireco.be](mailto:info@fireco.be)

TEMPEST FIRECO TOWERS  
4708 North Blythe Avenue  
93722 FRESNO - CALIFORNIA  
U.S.A.  
Tel.: +1 559 277 7577  
Fax: +1 559 277 7579  
[www.tempestfirecotowers.com](http://www.tempestfirecotowers.com)  
[info@tempestfirecotowers.com](mailto:info@tempestfirecotowers.com)

EUROMAST S.A.R.L.  
260, Rue Boucher de la Rupelle  
73100 GRESY SUR AIX  
FR - FRANCE  
Tel.: +33 4 79349215  
Fax: +33 4 793492 16  
[www.euromast.fr](http://www.euromast.fr)  
[fireco@euromast.fr](mailto:fireco@euromast.fr)

FIRECO ASIA SDN BHD  
48, Jalan TP7/2, Taman Perindustrian UEP  
47610 Subang Jaya, Selangor  
MY - MALAYSIA  
Tel.: +603 5192 4286  
Fax: +603 5192 4279  
[www.fireco-asia.com](http://www.fireco-asia.com)  
[gc@fireco-asia.com](mailto:gc@fireco-asia.com)